

CALGARY

**Public Teachers**

ALBERTA TEACHERS' ASSOCIATION LOCAL 38

# *2016 Class Size Census*

## *Results Report*



March 2017



# 2016 Class Size Census Results Report

## Table of Contents

	<i>Page #</i>
Executive Summary .....	3
Average Class Size by Grade .....	5
Average Number of Students with IPPs by Grade .....	5
Average Number of ELL Students by Grade .....	6
Average Number of Additional Staff by Grade .....	6
Class Size Frequency by Grade (2015 vs 2016).....	7
Comparison of 2016 Class Sizes to ACOL Guidelines .....	20
Comparison of 2015 Class Sizes to ACOL Guidelines .....	21
Percent of Students Who are ELL or On IPPs & Average Number of Students Per Adult by Subject & Grade.....	22
Average Class Sizes by Subject .....	28
Appendix A: Summary of 2014 Class Size Census Results .....	33



# Executive Summary

The third iteration of the Calgary Public Teachers class size census was conducted on 2016 December 6. This report provides readers with a snapshot of the class sizes and complexities with which students and teachers must contend. The information is presented in both graphical and tabular format for the reader.

New in this year's report is the contrast to the previous year's detailed data, showing the year-over-year changes in class size and student complexity.

The results of the 2015 census revealed that, as compared to 2014, class size and complexity both increased from 2014 to 2015. This year, overall class sizes have marginally decreased compared to 2015, and in most cases, are now below the sizes reported in the 2014 census.

This good news is tempered by the fact that classroom complexity has concurrently increased. In most grades, the average number of students with Individual Program Plans (IPPs) has increased. The average number of ELL students has also increased across the system compared to 2015. With both measures of complexity in a steady climb over a three-year period, the work of teachers is becoming exponentially more difficult. All this is being done without the addition of support staff or teaching partners – the overall number of additional staff in classrooms has remained stagnant as compared to last year.

In the graphs presented, the reader will note reference to Alberta's Commission on Learning (ACOL)<sup>1</sup>, which undertook a significant review of Alberta's Education system and produced a report in October 2003 that recommended the implementation of class size guidelines.

---

<sup>1</sup> Alberta's Commission on Learning. (2003, October). *Every Child Learns. Every Child Succeeds: Report and Recommendations*. Retrieved February 1, 2016, from <https://archive.education.alberta.ca/media/413413/commissionreport.pdf>

Those guidelines were as follows:

Kindergarten to Grade 3	17 students
Grades 4 to 6	23 students
Grades 7 to 9	25 students
Grades 10 to 12	27 students

(ACOL Recommendation 14, P. 61)

That same recommendation also added:

“Generally, classes with special needs students, students whose first language is not English, and vulnerable and at-risk students should be smaller than the guideline.”

(ACOL, P. 61)

Further on that same page the commission continued:

“The Province should provide adequate funding to enable school jurisdictions to meet the class size guidelines. Information on average class sizes should be included in school jurisdiction profiles and used to determine provincial funding levels.”

The Government of Alberta accepted these recommendations.

As with last year, Division 1 classrooms (grades K through 3) lead the district in the proportion of classes that exceed the ACOL guidelines, with values ranging from 72% in Kindergarten to 88% of Grade 3 classes exceeding the average. More than 90% of Division 1 students across the system are in class sizes that exceed the ACOL recommendation.

It is worth noting that, in the case of the Calgary Board of Education, *at no grade level* were the ACOL class size guidelines achieved, even without consideration for special needs students. Clearly, the Government of Alberta has not fulfilled its commitment to Alberta students.



### Average Class Size by Grade

Grade	Average # Students 2016	Average # of Students 2015	Max # of Students 2016	Max # of Students 2015	# Classes Reporting 2016	# Classes Reporting 2015
Kindergarten	20.75	21.27	97	61	408	893
Grade 1	21.69	22.49	72	87	800	1796
Grade 2	22.01	22.86	82	140	592	1413
Grade 3	23.44	24.65	65	112	733	1311
Grade 4	25.35	25.92	65	99	651	1199
Grade 5	25.27	25.72	90	92	671	1086
Grade 6	26.35	26.67	79	76	695	1110
Grade 7	27.62	27.98	98	70	809	918
Grade 8	27.84	28.12	150	72	785	887
Grade 9	27.81	28.30	84	99	812	890
Grade 10	28.19	29.71	70	99	351	541
Grade 11	28.02	29.28	93	62	327	461
Grade 12	28.08	29.34	67	62	318	387
<b>System</b>	<b>25.47</b>	<b>25.55</b>	<b>150</b>	<b>140</b>	<b>7952</b>	<b>12892</b>

### Average Number of Students with IPPs by Grade

Grade	Average # of IPPs 2016	Average # of IPPs 2015	Max # of IPPs 2016	Max # of IPPs 2015
Kindergarten	2.91	3.28	33	19
Grade 1	2.47	2.11	40	55
Grade 2	2.48	2.18	66	22
Grade 3	2.85	2.85	33	25
Grade 4	3.45	3.39	30	44
Grade 5	4.02	3.36	50	26
Grade 6	4.27	4.11	70	27
Grade 7	4.69	4.82	49	30
Grade 8	4.79	4.72	66	32
Grade 9	5.15	4.83	77	40
Grade 10	5.78	6.05	27	31
Grade 11	5.40	5.54	48	33
Grade 12	5.11	4.56	26	30
<b>System</b>	<b>4.00</b>	<b>3.59</b>	<b>77</b>	<b>55</b>

## Average Number of ELL Students by Grade

Grade	Average # of	Average # of ELL	Max # of ELL	
	ELL 2016	2015	Max # of ELL 2016	2015
Kindergarten	7.05	6.84	71	40
Grade 1	7.75	6.95	77	37
Grade 2	8.23	6.82	66	52
Grade 3	8.60	7.97	45	50
Grade 4	9.01	9.01	47	50
Grade 5	8.84	8.47	63	49
Grade 6	9.07	7.18	66	47
Grade 7	6.77	5.61	51	31
Grade 8	4.95	4.74	80	32
Grade 9	3.96	3.96	28	31
Grade 10	4.74	4.41	31	30
Grade 11	4.01	4.05	70	26
Grade 12	3.52	3.98	26	37
<b>System</b>	<b>6.93</b>	<b>6.64</b>	<b>80</b>	<b>52</b>

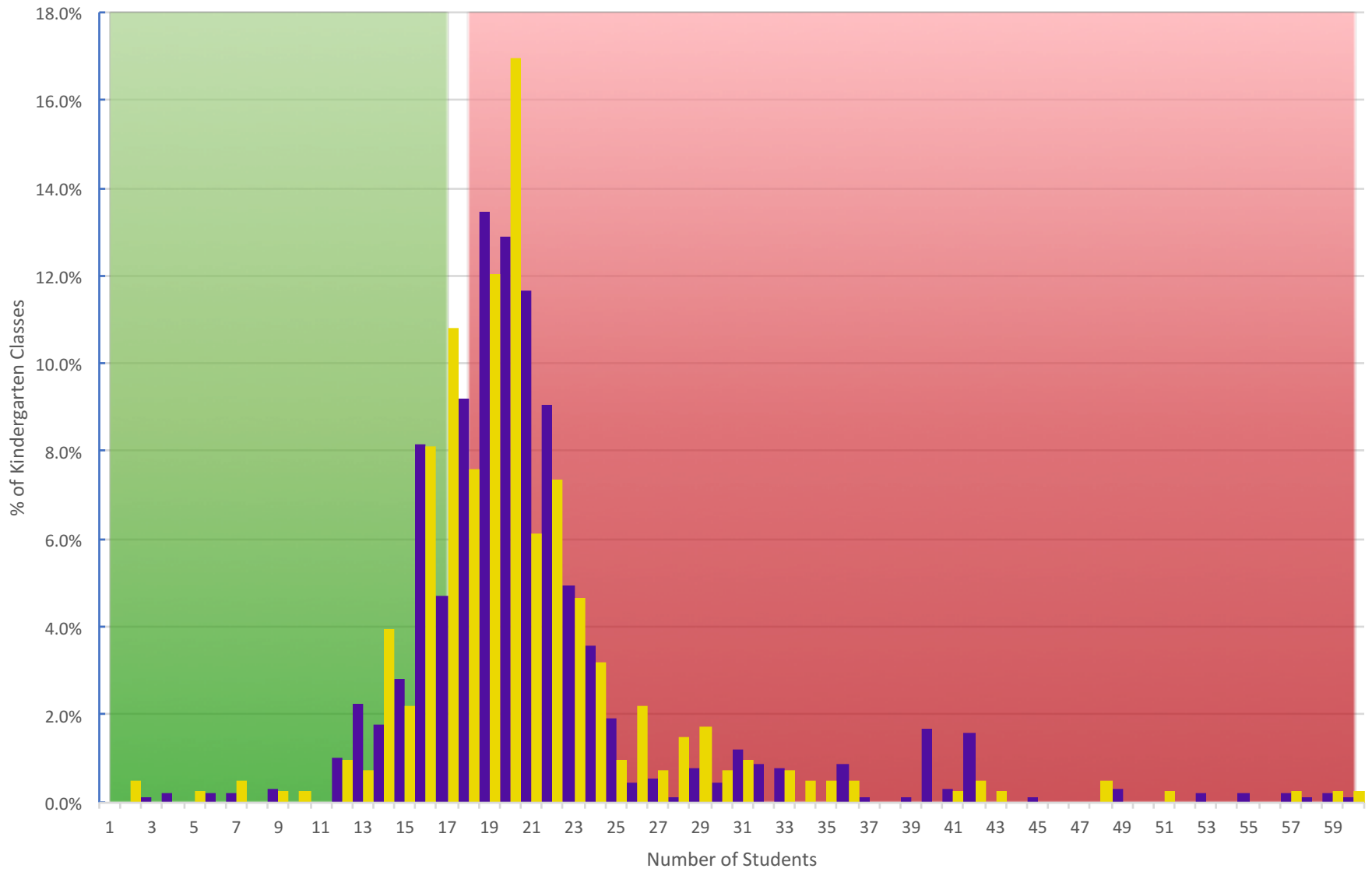
## Average Number of Additional Staff by Grade

Grade	Average Addn'l	Average Addn'l
	Staff 2016	Staff 2015
Kindergarten	0.60	0.51
Grade 1	0.42	0.35
Grade 2	0.33	0.32
Grade 3	0.34	0.35
Grade 4	0.38	0.29
Grade 5	0.25	0.23
Grade 6	0.20	0.21
Grade 7	0.20	0.20
Grade 8	0.12	0.15
Grade 9	0.10	0.13
Grade 10	0.19	0.13
Grade 11	0.12	0.07
Grade 12	0.10	0.12
<b>System</b>	<b>0.26</b>	<b>0.26</b>

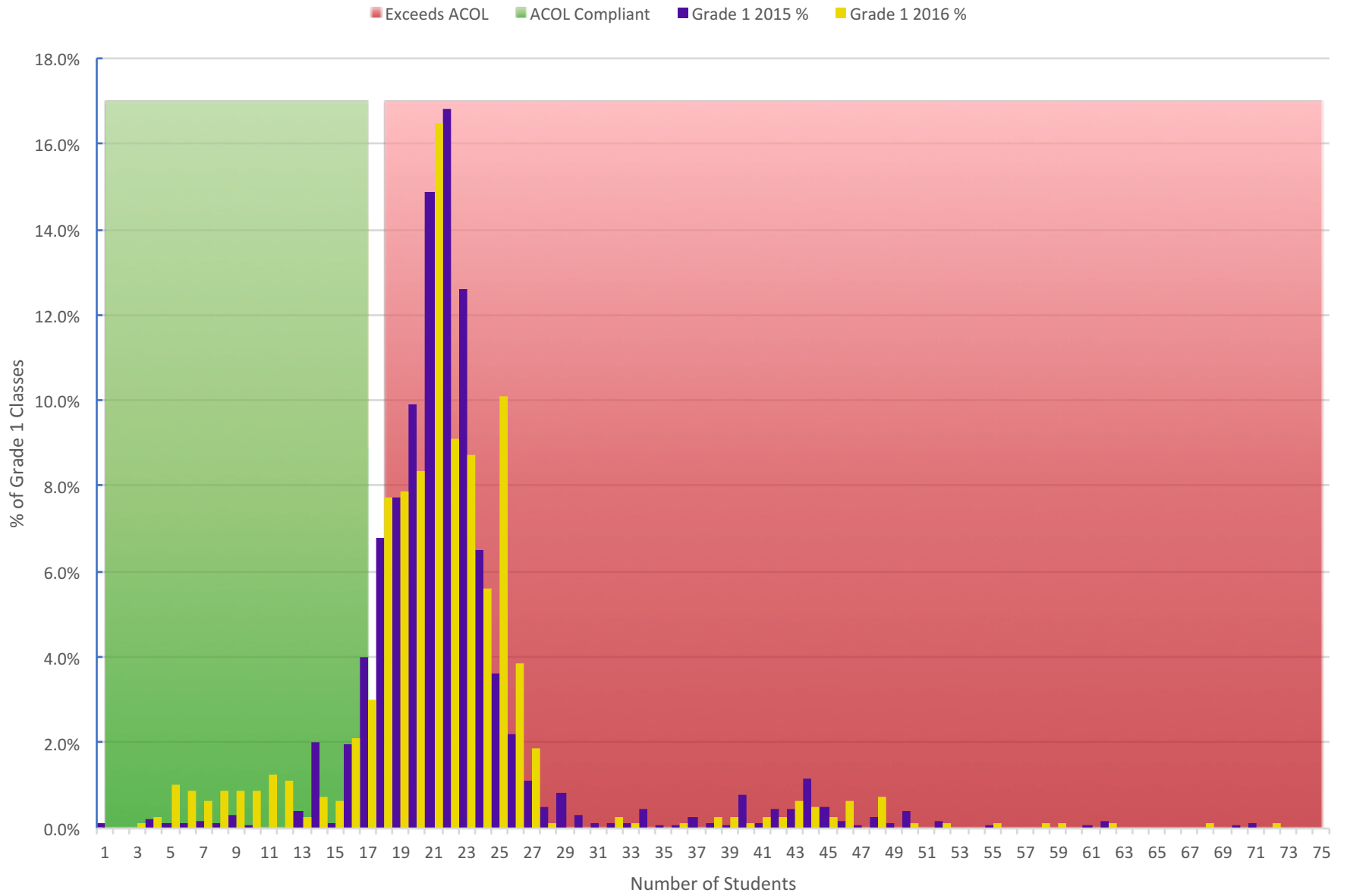


# Kindergarten Class Size

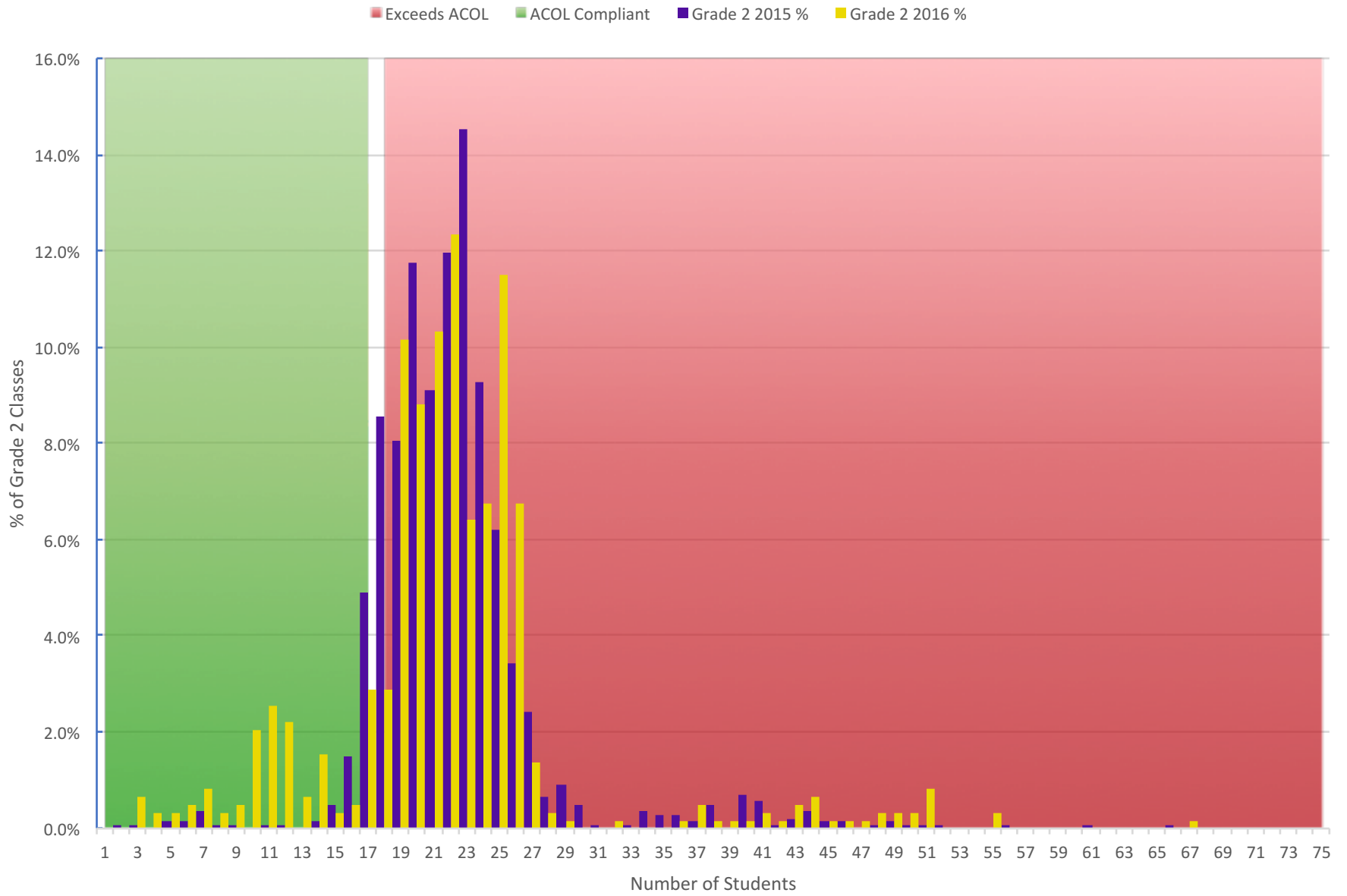
Exceeds ACOL ACOL Compliant Kindergarten 2015 % Kindergarten 2016 %



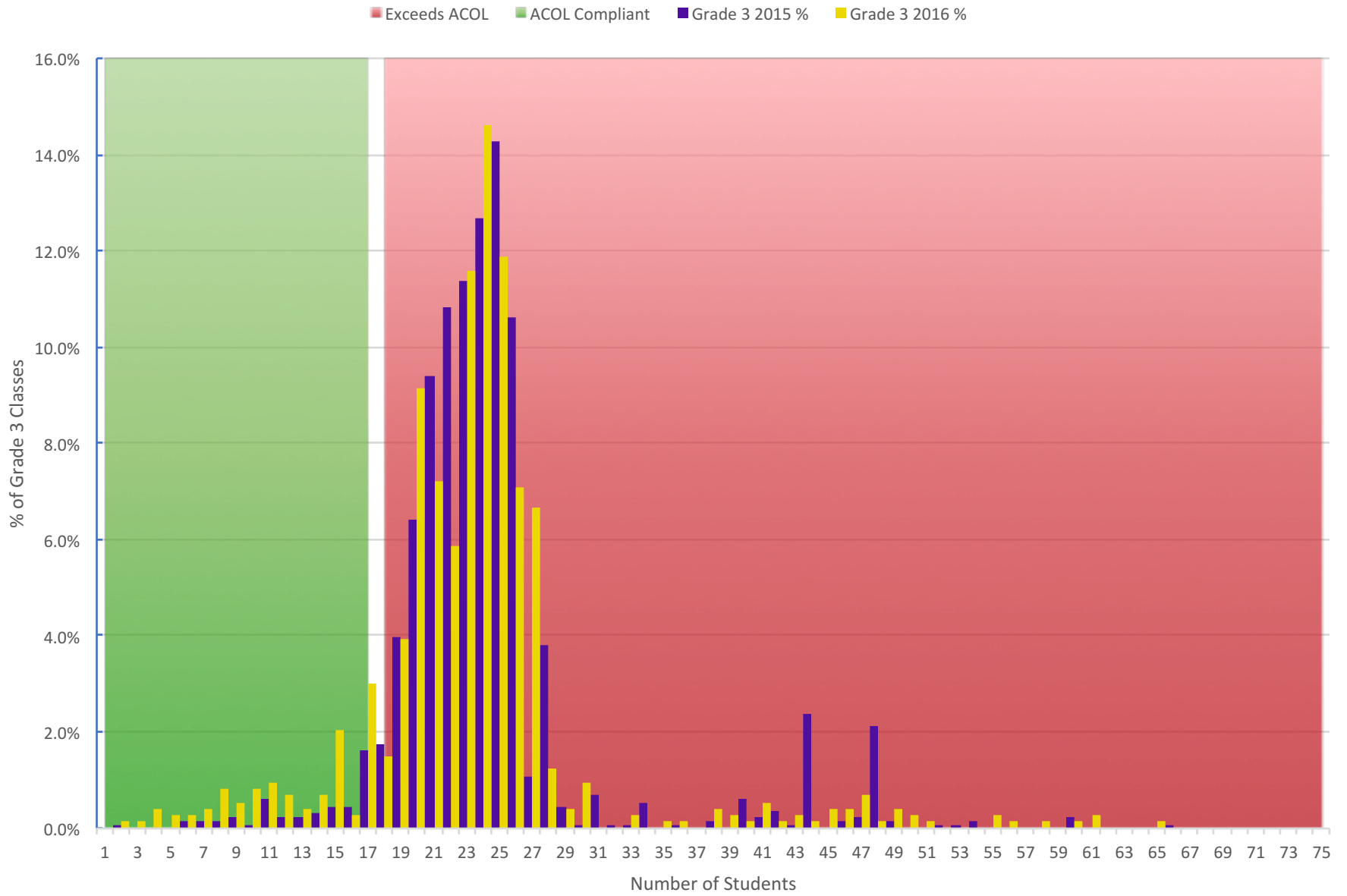
# Grade 1 Class Size



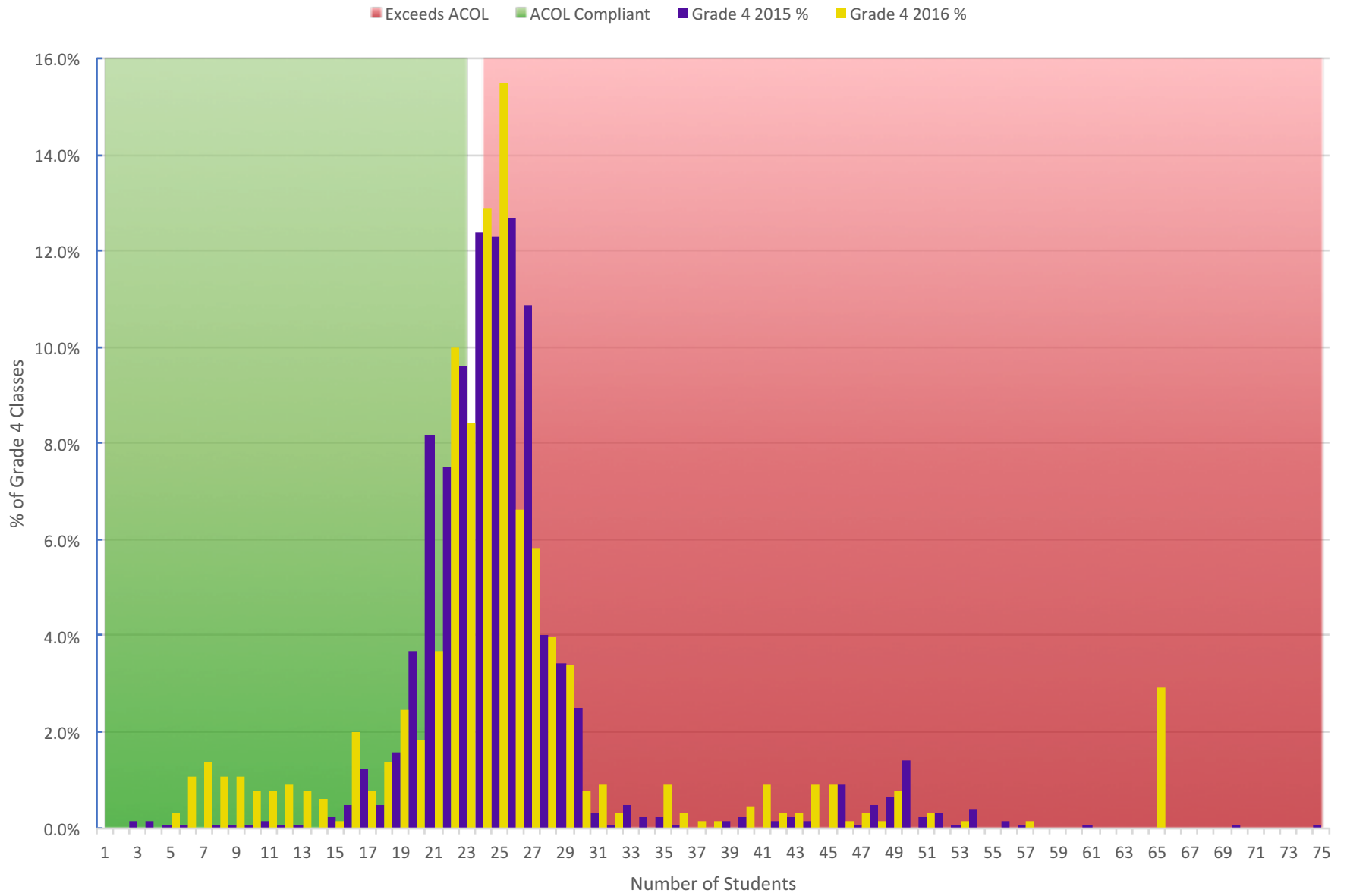
## Grade 2 Class Size



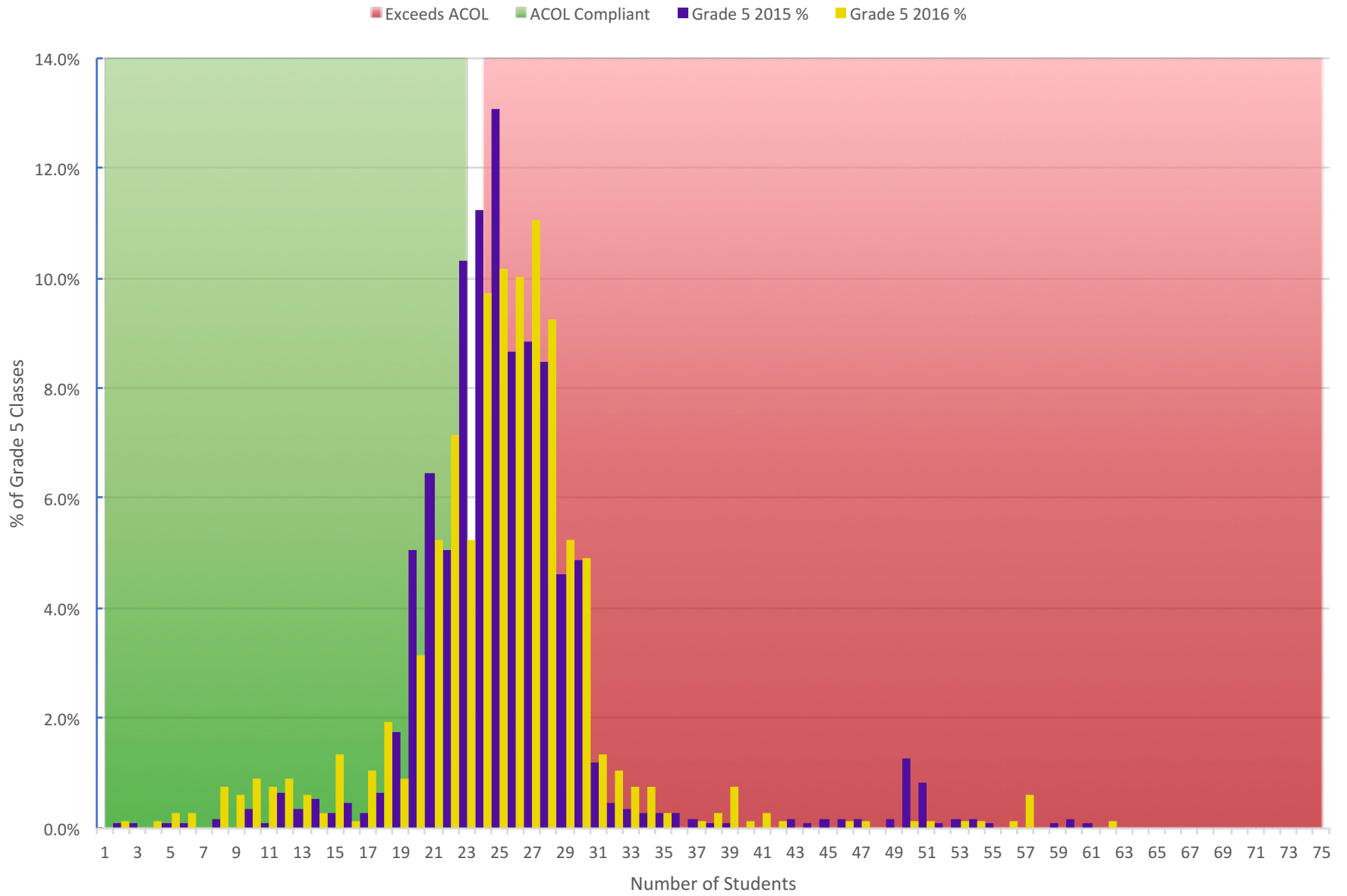
## Grade 3 Class Size



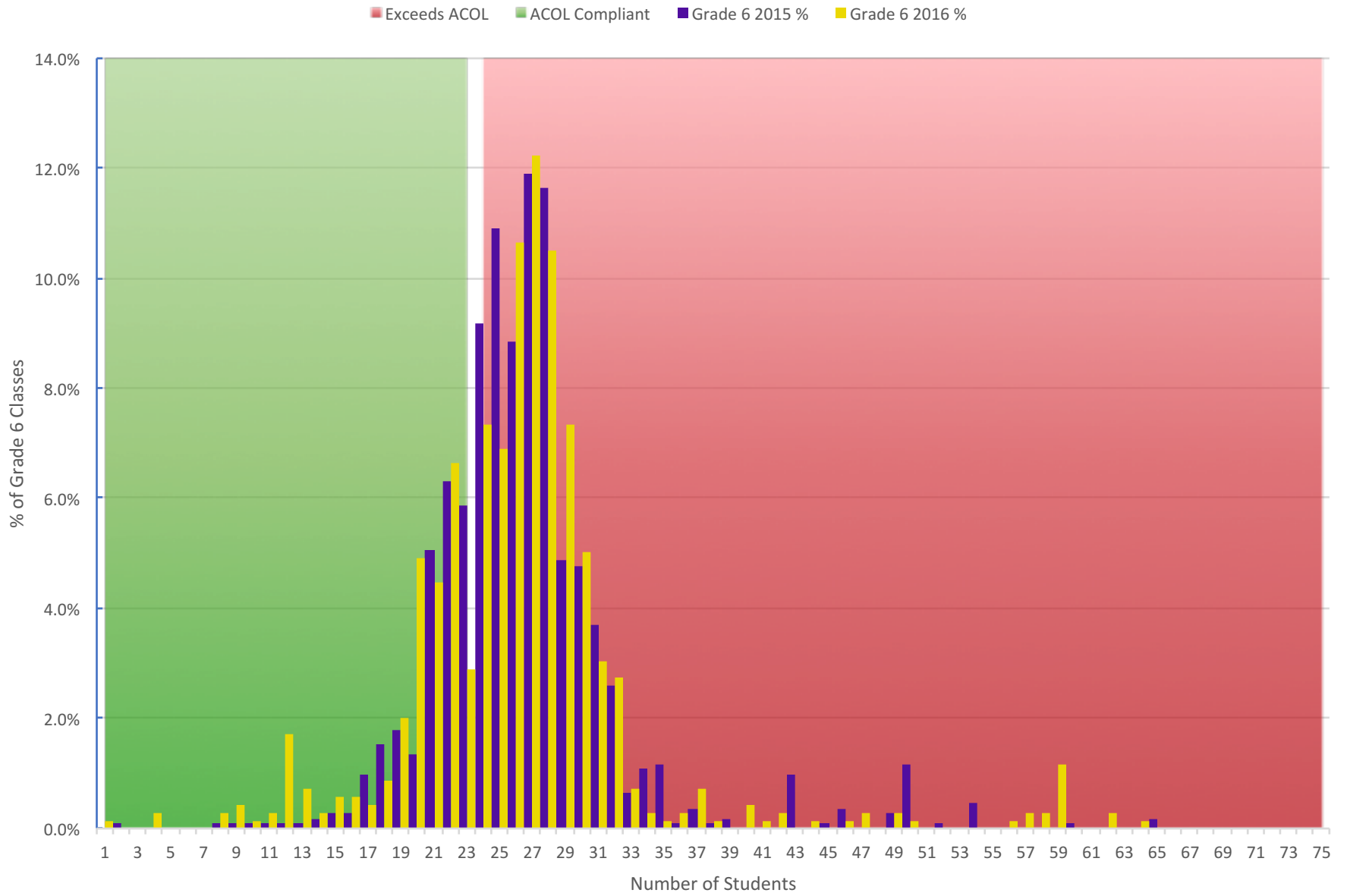
## Grade 4 Class Size



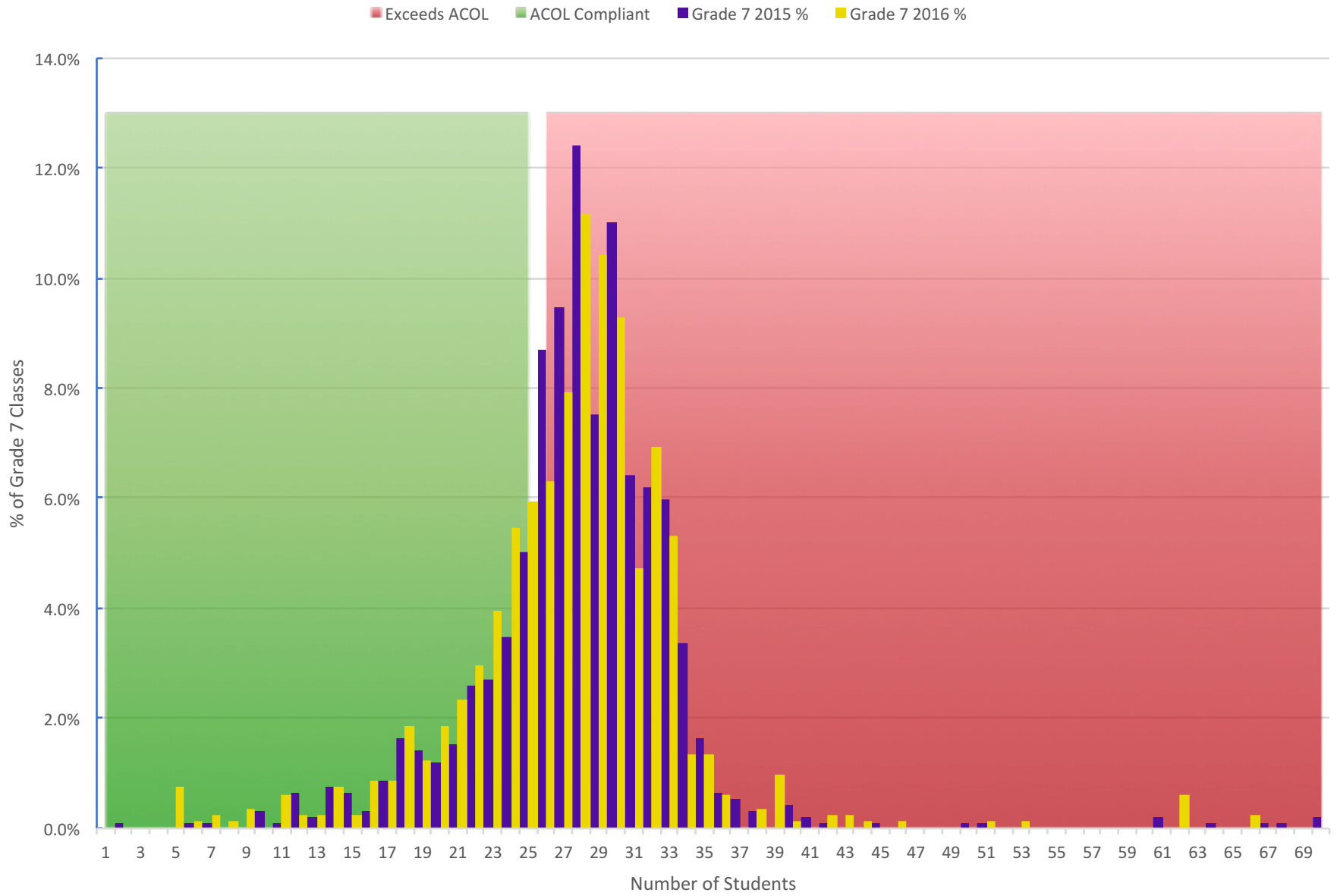
## Grade 5 Class Size



### Grade 6 Class Size

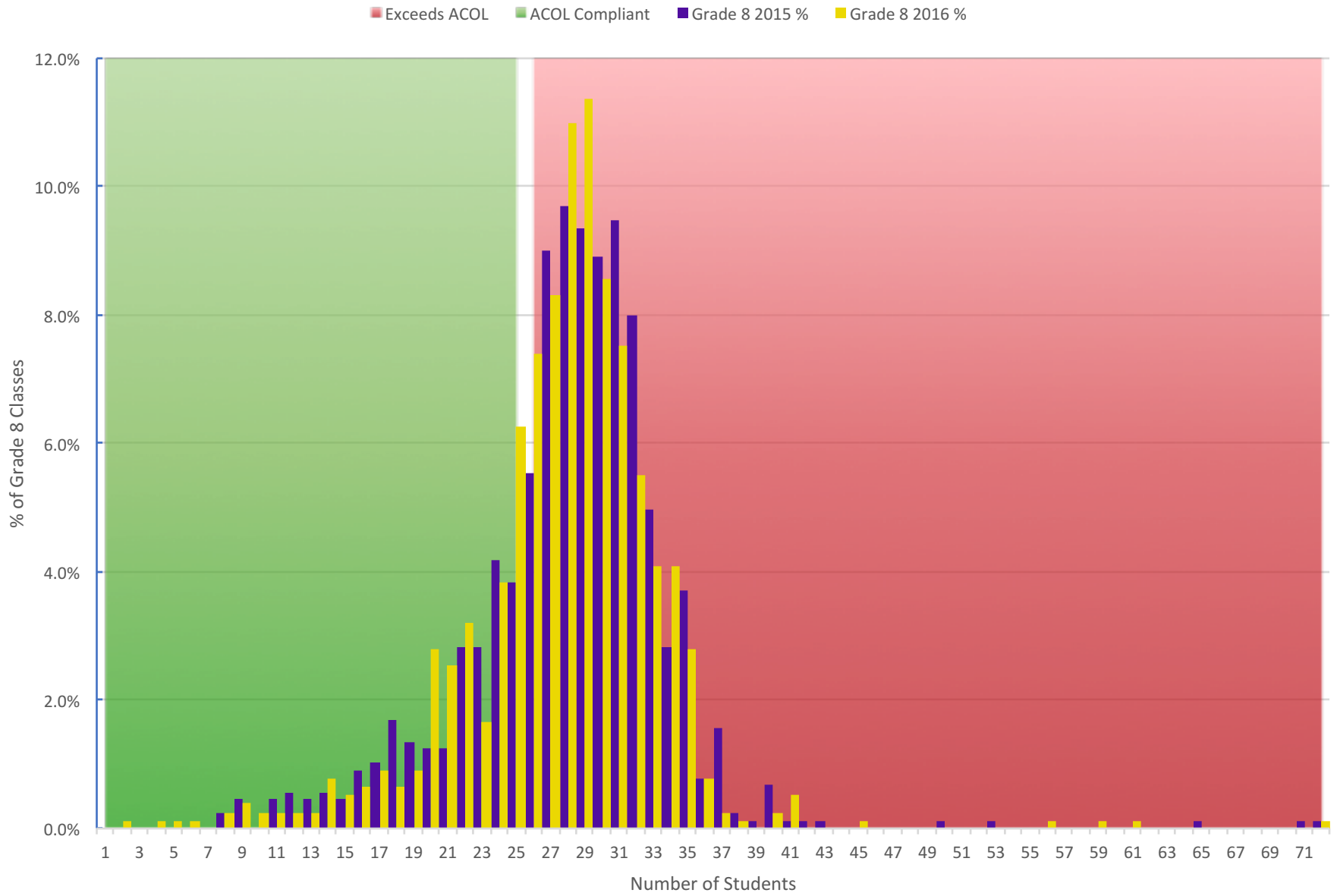


### Grade 7 Class Size

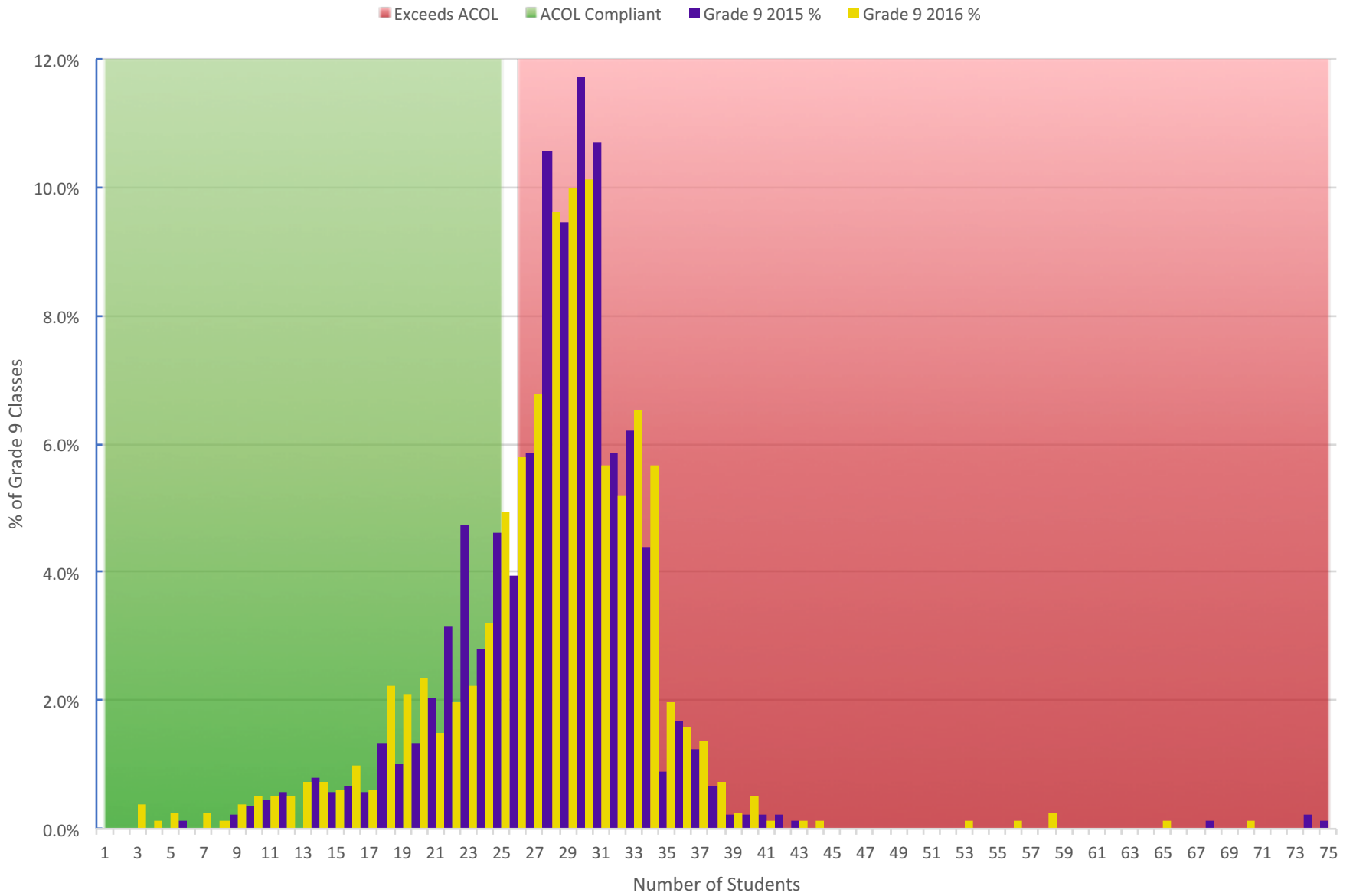




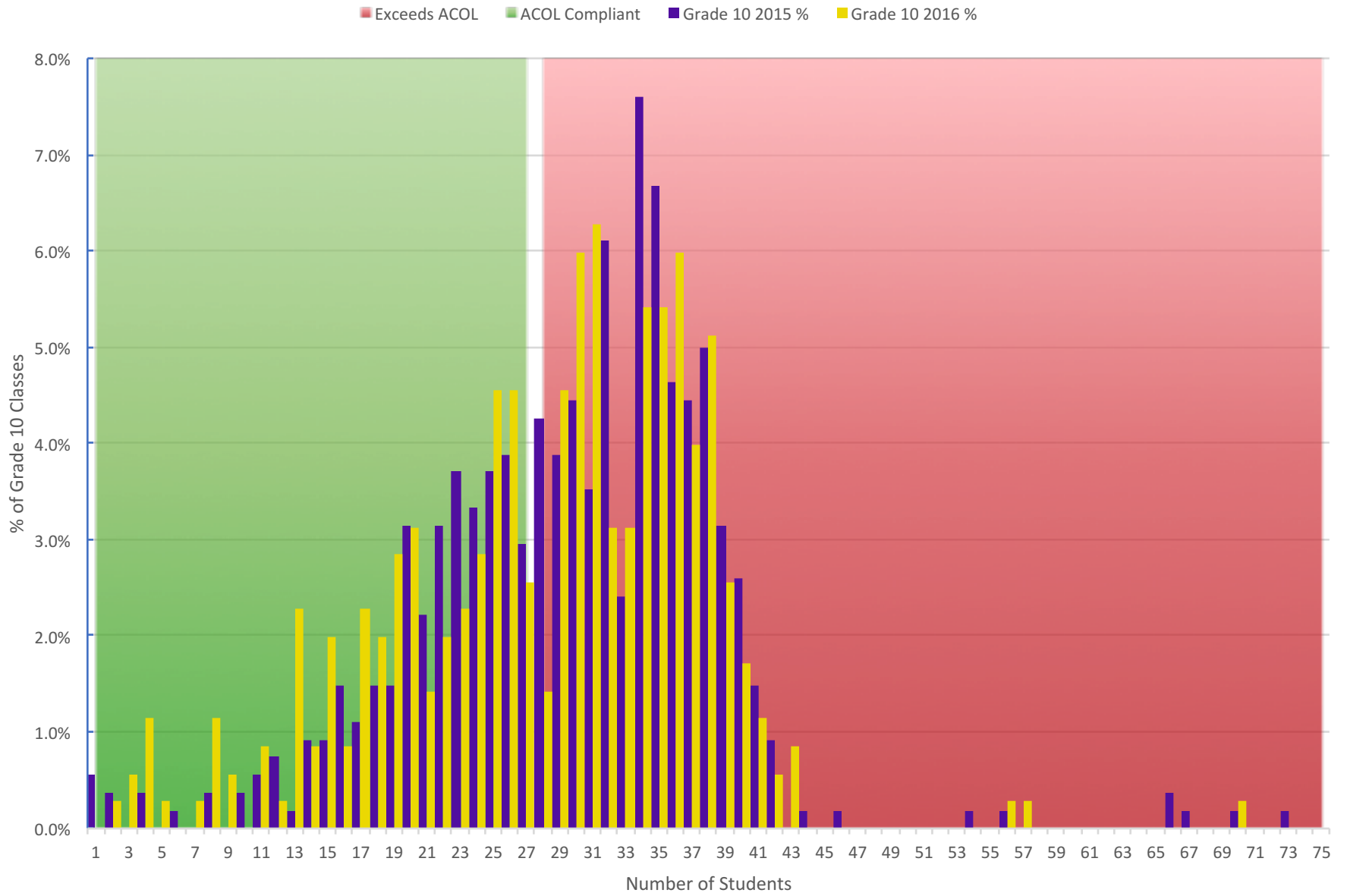
### Grade 8 Class Size



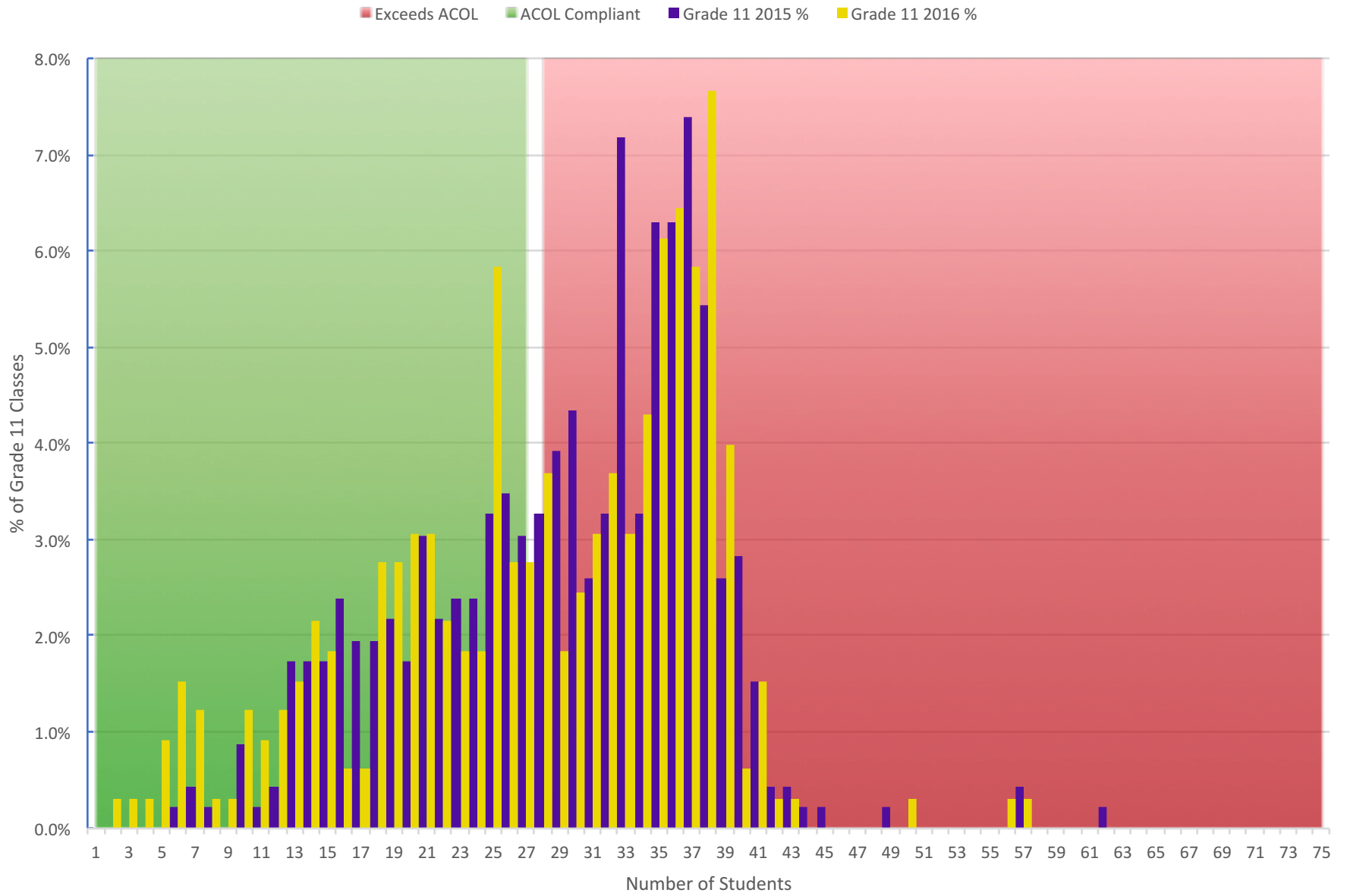
## Grade 9 Class Size



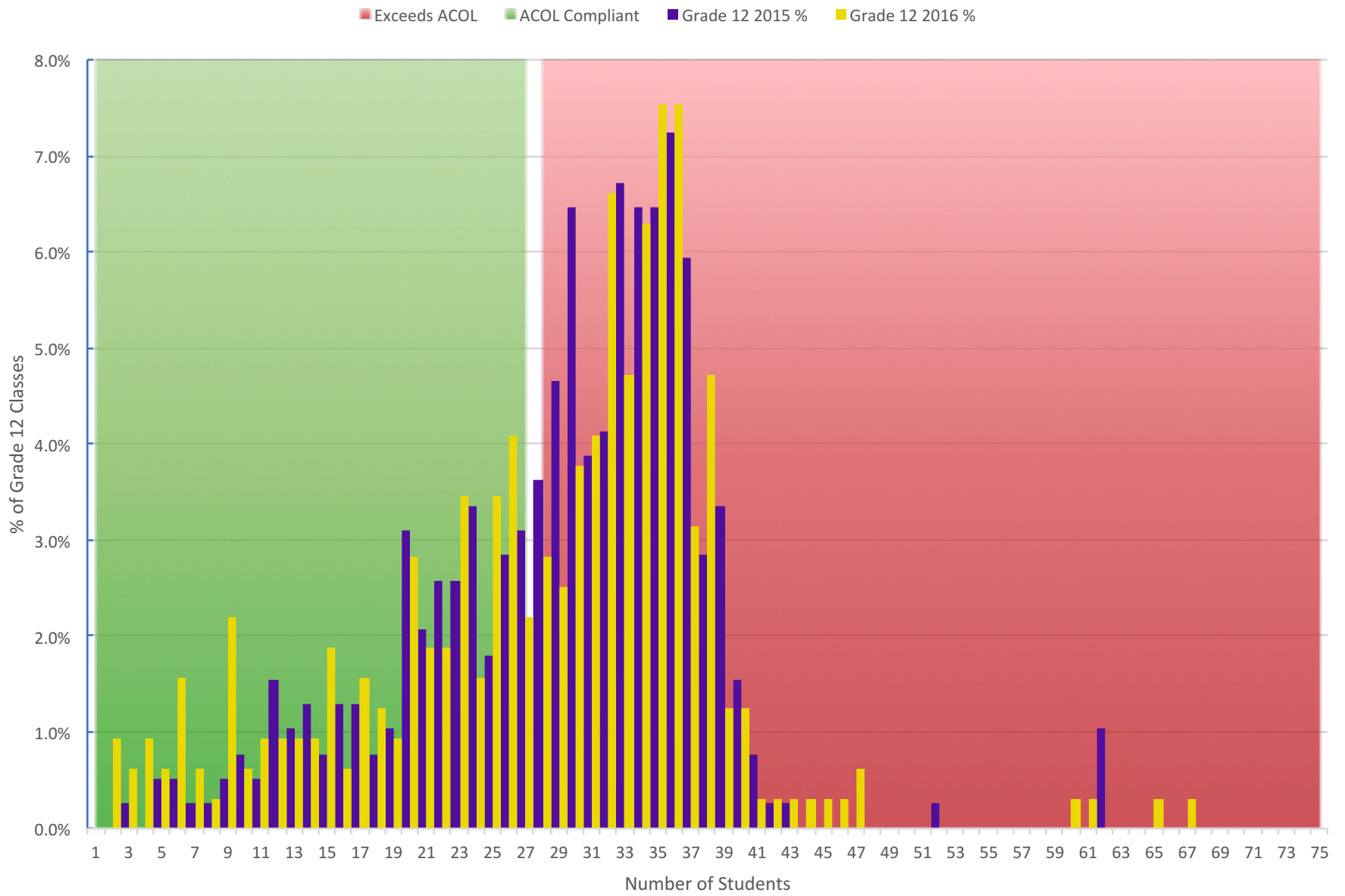
### Grade 10 Class Size



## Grade 11 Class Size



## Grade 12 Class Size



### Comparison of 2016 Class Sizes to ACOL\* Guidelines

Grade	ACOL Guidelines (Max Class Size)	Number of Classes Reported	# of Classes over ACOL Guidelines	% of Classes Exceeding ACOL Guidelines	Total Students in Classes Reported	# of Students in Classes Exceeding ACOL Guidelines	% Of Students in Classes Exceeding ACOL Guidelines
Kindergarten	17	408	292	<b>72%</b>	8464	6700	<b>79%</b>
Grade 1	17	800	683	<b>85%</b>	17353	15953	<b>92%</b>
Grade 2	17	592	496	<b>84%</b>	13031	11919	<b>91%</b>
Grade 3	17	733	646	<b>88%</b>	17181	16100	<b>94%</b>
Grade 4	23	651	394	<b>61%</b>	16503	11758	<b>71%</b>
Grade 5	23	671	458	<b>68%</b>	16953	12948	<b>76%</b>
Grade 6	23	695	503	<b>72%</b>	18313	14640	<b>80%</b>
Grade 7	25	809	558	<b>69%</b>	22343	17129	<b>77%</b>
Grade 8	25	785	575	<b>73%</b>	21853	17481	<b>80%</b>
Grade 9	25	812	592	<b>73%</b>	22579	18256	<b>81%</b>
Grade 10	27	351	204	<b>58%</b>	9895	7051	<b>71%</b>
Grade 11	27	327	183	<b>56%</b>	9162	6492	<b>71%</b>
Grade 12	27	318	191	<b>60%</b>	8930	6662	<b>75%</b>

\* Alberta Commission on Learning Report (2003)

### Comparison of 2015 Class Sizes to ACOL\* Guidelines

Grade	ACOL Guidelines (Max Class Size)	Number of Classes Reported	# of Classes over ACOL Guidelines	% of Classes Exceeding ACOL Guidelines	Total Students in Classes Reported	# of Students in Classes Exceeding ACOL Guidelines	% Of Students in Classes Exceeding ACOL Guidelines
Kindergarten	17	893	698	<b>78%</b>	18995	16082	<b>85%</b>
Grade 1	17	1796	1622	<b>90%</b>	40392	37842	<b>94%</b>
Grade 2	17	1413	1299	<b>92%</b>	32306	30562	<b>95%</b>
Grade 3	17	1311	1249	<b>95%</b>	32314	31471	<b>97%</b>
Grade 4	23	1199	790	<b>66%</b>	31079	22552	<b>73%</b>
Grade 5	23	1086	729	<b>67%</b>	27929	20607	<b>74%</b>
Grade 6	23	1110	841	<b>76%</b>	29603	24033	<b>81%</b>
Grade 7	25	918	699	<b>76%</b>	25683	21105	<b>82%</b>
Grade 8	25	887	672	<b>76%</b>	24945	20514	<b>82%</b>
Grade 9	25	889	664	<b>75%</b>	25188	20464	<b>81%</b>
Grade 10	27	541	340	<b>63%</b>	16075	11917	<b>74%</b>
Grade 11	27	460	287	<b>62%</b>	13499	10019	<b>74%</b>
Grade 12	27	387	255	<b>66%</b>	11355	8756	<b>77%</b>

\* Alberta Commission on Learning Report (2003)

## Percent of Students Who Are ELL or On IPPs & Average Number of Students Per Adult by Subject & Grade

Course	Average % of Students with IPPs 2016	Average % of Students with IPPs 2015	Average % of Students who are ELL 2016	Average % of Students who are ELL 2015	Average Number of Students Per Adult 2016	Average Number of Students Per Adult 2015
<b>Kindergarten</b>						
Art	7.21%	16.36	67.45%	29.81	15.33	17.03
English Language Arts	8.74%	15.49	39.26%	36.97	20.38	15.68
French as a Second Language	6.82%	8.60	0.00%	0.00	14.00	16.88
French Language Arts	10.00%	11.00	70.00%	4.14	20.00	17.21
German Language Arts	14.29%	100.00	19.05%	0.00	21.00	2.00
Health and Life Skills	4.73%	18.73	64.36%	26.06	16.20	19.40
Math	12.54%	16.59	49.78%	32.94	19.57	16.32
Music	8.26%	14.14	18.81%	34.17	18.26	16.94
Physical Education	12.14%	13.66	35.96%	27.79	18.65	16.42
Science	14.07%	15.70	40.77%	34.64	23.28	16.54
Social Studies	9.01%	17.04	52.83%	32.14	13.67	17.28
Spanish Language Arts	12.50%	5.53	0.00%	9.25	16.00	16.71
Ukrainian Language Arts	13.04%	8.71	0.00%	14.58	23.00	19.75
Other Locally Developed Course	52.94%	51.41	5.88%	7.00	12.75	8.30
Other Course	14.38%	20.93	34.75%	37.35	18.63	14.35
Kindergarten Crosscurricular	15.52%	-	29.87%	-	13.31	-
<b>Kindergarten Total</b>	<b>14.03%</b>	<b>16.22</b>	<b>31.74%</b>	<b>31.67</b>	<b>15.17</b>	<b>16.21</b>
<b>Grade 1</b>						
Art	14.30%	7.47	31.86%	22.40	19.12	19.14
Drama	0.00%	14.98	90.48%	31.29	21.00	21.50
English Language Arts	12.88%	10.04	43.07%	33.56	16.26	17.47
French as a Second Language	5.04%	7.30	58.26%	51.78	21.00	22.46
French Language Arts	4.63%	3.58	2.94%	4.86	15.35	19.14
German Language Arts	9.89%	12.31	25.55%	19.66	26.67	22.40
Health and Life Skills	11.78%	10.95	29.87%	32.32	18.30	18.70
Math	10.77%	9.23	33.33%	32.56	18.63	17.77
Music	11.15%	11.68	22.86%	25.72	20.36	20.26
Physical Education	10.10%	9.01	28.18%	26.41	21.65	20.07
Science	13.11%	9.46	30.87%	31.12	17.87	18.73
Social Studies	11.34%	9.23	33.77%	33.35	19.11	18.55
Spanish Language Arts	10.98%	3.10	13.26%	1.52	19.75	21.67
Ukrainian Language Arts	19.23%	-	11.54%	-	13.00	-
Other Locally Developed Course	44.38%	-	8.75%	-	13.00	-
Other Course	15.98%	10.32	40.46%	38.02	14.34	16.70
Grade 1 Crosscurricular	11.19%	-	38.08%	-	15.76	-
<b>Grade 1 Total</b>	<b>11.63%</b>	<b>9.44</b>	<b>34.86%</b>	<b>30.82</b>	<b>17.54</b>	<b>18.48</b>
<b>Grade 2</b>						
Art	7.47%	11.22	40.08%	25.68	21.89	18.79
Drama	9.09%	13.64	50.00%	31.82	22.00	22.00
English Language Arts	14.60%	9.94	45.69%	33.86	16.37	17.18
French as a Second Language	2.08%	2.16	47.92%	30.04	24.00	22.06
French Language Arts	7.11%	5.98	2.72%	4.95	23.00	17.57
Health and Life Skills	11.22%	10.32	38.43%	25.73	19.80	20.21
Math	10.22%	9.52	41.36%	29.96	18.03	19.13
Music	8.74%	7.76	40.56%	30.79	22.08	22.50
Physical Education	10.11%	10.60	32.26%	25.31	21.78	21.24
Science	23.63%	10.79	40.98%	29.12	20.08	19.40
Social Studies	10.21%	9.45	33.12%	26.91	19.84	19.81
Spanish Language Arts	5.00%	3.13	4.00%	10.99	25.25	18.63
Ukrainian Language Arts	11.54%	14.51	7.69%	29.54	26.00	17.17
Other Locally Developed Course	10.39%	-	35.26%	-	19.50	-
Other Course	5.09%	23.53	74.40%	36.41	21.33	17.55



Course	Average % of Students with IPPs 2016	Average % of Students with IPPs 2015	Average % of Students who are ELL 2016	Average % of Students who are ELL 2015	Average Number of Students Per Adult 2016	Average Number of Students Per Adult 2015
Grade 2 Crosscurricular	10.70%	-	33.95%	-	17.01	-
<b>Grade 2 Total</b>	<b>11.23%</b>	<b>10.02</b>	<b>36.56%</b>	<b>29.18</b>	<b>18.42</b>	<b>19.06</b>
<b>Grade 3</b>						
Art	12.82%	10.35	43.09%	30.61	20.69	20.63
English Language Arts	11.04%	12.17	38.03%	35.12	19.90	18.96
French as a Second Language	7.73%	11.81	42.26%	39.97	20.50	23.29
French Language Arts	8.12%	5.00	18.83%	6.43	20.25	21.35
German Language Arts	10.53%	-	21.05%	-	19.00	-
Health and Life Skills	14.66%	9.96	48.03%	36.42	21.08	20.45
Math	12.65%	11.03	37.96%	32.83	18.95	19.45
Music	13.24%	10.54	31.45%	29.29	23.30	25.91
Physical Education	10.32%	12.35	34.01%	27.76	22.67	21.16
Science	10.84%	11.62	35.70%	32.78	21.00	20.60
Social Studies	10.92%	12.03	37.90%	33.57	22.09	20.51
Spanish Language Arts	9.52%	14.39	4.76%	5.50	21.00	18.83
Other Locally Developed Course	27.03%	12.04	5.03%	17.39	19.50	24.50
Other Course	33.77%	11.12	20.12%	28.63	12.73	18.00
Grade 3 Crosscurricular	13.27%	-	34.32%	-	17.12	-
<b>Grade 3 Total</b>	<b>12.50%</b>	<b>11.45</b>	<b>35.49%</b>	<b>32.16</b>	<b>19.65</b>	<b>20.17</b>
<b>Grade 4</b>						
Art	15.81%	17.11	24.70%	28.88	21.72	21.35
Drama	6.45%	16.67	0.00%	12.50	31.00	24.00
English Language Arts	13.45%	12.82	39.42%	36.52	19.89	20.31
French as a Second Language	14.26%	12.95	28.92%	33.82	22.46	23.59
French Language Arts	5.96%	10.86	13.50%	14.00	27.17	24.82
German	15.64%	-	35.82%	-	12.33	-
Health and Life Skills	12.34%	14.49	45.02%	38.73	20.81	22.71
Math	17.69%	13.54	40.64%	33.78	19.33	21.09
Music	10.12%	15.51	29.02%	30.74	25.23	24.78
Physical Education	11.73%	13.18	32.21%	29.48	23.45	23.68
Science	13.09%	12.48	36.64%	35.02	19.50	21.36
Social Studies	13.89%	12.46	33.03%	36.50	21.27	21.92
Spanish	10.67%	5.30	1.04%	16.00	19.25	23.40
Other Locally Developed Course	53.42%	11.87	5.00%	32.04	12.83	24.00
Other Course	13.84%	16.33	40.15%	47.26	18.61	24.05
Grade 4 Crosscurricular	13.81%	-	35.09%	-	18.21	-
<b>Grade 4 Total</b>	<b>13.66%</b>	<b>13.35</b>	<b>34.35%</b>	<b>34.26</b>	<b>20.38</b>	<b>21.86</b>
<b>Grade 5</b>						
Art	12.73%	11.86	38.40%	31.27	24.75	23.68
Blackfoot Language and Culture	56.41%	7.41	0.00%	25.93	19.50	27.00
Chinese	2.86%	9.09	11.43%	38.18	35.00	18.33
CTS (Any course)	11.35%	19.50	39.38%	27.55	24.43	24.38
Drama	24.51%	12.80	61.57%	31.50	19.50	20.96
English Language Arts	17.62%	13.95	39.41%	36.93	20.66	20.76
French as a Second Language	14.07%	12.84	30.34%	26.33	25.24	24.11
French Language Arts	6.48%	16.80	13.33%	16.90	26.00	22.75
German	7.80%	-	37.57%	-	19.25	-
Health and Life Skills	19.16%	11.10	39.75%	35.71	22.83	24.73
Humanities	19.07%	11.96	31.60%	32.14	25.33	23.96
Japanese	24.53%	-	7.55%	-	26.50	-
Math	18.15%	13.93	32.44%	31.56	21.76	21.08
Music	20.63%	16.49	25.05%	32.37	26.26	26.77
Physical Education	18.27%	14.44	36.19%	30.33	24.05	24.54
Science	13.81%	13.00	33.80%	33.49	22.73	23.09
Social Studies	16.30%	12.57	42.37%	35.78	21.10	22.12
Spanish	10.43%	7.27	1.98%	8.60	17.17	25.11
Other Locally Developed Course	8.33%	11.79	33.33%	34.05	24.00	17.25
Other Course	30.61%	13.27	31.17%	34.36	21.40	23.11
Grade 5 Crosscurricular	15.73%	-	37.66%	-	19.83	-

Course	Average % of Students with IPPs 2016	Average % of Students with IPPs 2015	Average % of Students who are ELL 2016	Average % of Students who are ELL 2015	Average Number of Students Per Adult 2016	Average Number of Students Per Adult 2015
<b>Grade 5 Total</b>	<b>16.64%</b>	<b>13.45</b>	<b>35.22%</b>	<b>32.69</b>	<b>22.38</b>	<b>22.74</b>
<b>Grade 6</b>						
Art	18.69%	16.30	39.80%	29.10	21.35	23.30
Blackfoot Language and Culture	0.00%	14.29	25.00%	3.57	8.00	28.00
Chinese	10.48%	6.17	44.76%	63.17	18.00	24.50
CTS (Any course)	17.09%	13.40	30.64%	29.59	23.33	23.42
Drama	12.26%	17.74	16.21%	37.26	20.20	24.33
English Language Arts	17.92%	16.86	42.06%	28.45	23.50	22.05
French as a Second Language	15.36%	15.06	28.32%	17.74	23.95	25.34
French Language Arts	21.70%	19.24	8.78%	20.33	24.33	24.56
German	8.33%	-	16.67%	-	12.00	-
Health and Life Skills	21.71%	15.62	39.50%	26.49	26.96	23.08
Humanities	14.49%	14.59	27.10%	31.74	26.39	24.87
Japanese	21.43%	19.35	3.57%	0.00	28.00	31.00
Math	14.40%	15.30	34.68%	25.80	23.37	22.71
Music	15.56%	10.96	22.50%	19.53	24.21	25.75
Physical Education	16.85%	16.71	29.82%	20.72	27.64	25.63
Punjabi	27.59%	-	0.00%	-	29.00	-
Science	15.31%	15.09	41.59%	27.63	24.19	23.99
Social Studies	11.74%	14.38	42.40%	27.17	24.57	24.50
Spanish	8.27%	8.71	4.28%	4.43	23.63	22.79
Other Locally Developed Course	22.08%	19.78	34.60%	21.14	23.00	25.61
Other Course	27.97%	16.27	23.50%	38.81	19.39	23.29
Grade 6 Crosscurricular	19.42%	-	33.31%	-	20.17	-
<b>Grade 6 Total</b>	<b>16.51%</b>	<b>15.39</b>	<b>33.50%</b>	<b>26.49</b>	<b>23.67</b>	<b>23.84</b>
<b>Grade 7</b>						
Art	21.02%	19.57	16.52%	15.69	26.13	26.19
CTS (Any course)	18.17%	17.05	24.19%	18.70	23.49	21.94
Drama	18.87%	20.00	19.37%	9.46	21.67	22.50
English Language Arts	16.04%	14.75	20.65%	17.44	26.32	25.85
French as a Second Language	8.90%	12.27	33.95%	13.68	24.84	28.00
French Language Arts	10.59%	13.76	10.00%	7.23	29.71	29.83
Health and Life Skills	17.44%	11.40	21.19%	36.77	29.60	30.13
Humanities	14.47%	18.36	27.43%	21.20	24.95	23.99
Math	17.95%	17.28	24.70%	20.46	24.73	25.43
Music	13.70%	14.46	23.86%	18.86	26.00	27.60
Physical Education	17.14%	17.08	21.83%	16.62	27.84	28.94
Science	17.86%	16.65	25.04%	18.39	26.31	26.21
Social Studies	18.80%	12.89	17.82%	23.08	27.17	27.34
Spanish	16.23%	10.61	4.55%	8.58	25.00	22.50
Ukrainian	12.50%	-	4.17%	-	24.00	-
Other Locally Developed Course	22.07%	38.71	27.24%	12.93	18.39	21.28
Other Course	36.59%	20.97	19.96%	17.70	19.39	20.14
Grade 7 Crosscurricular	27.94%	-	20.88%	-	18.43	-
<b>Grade 7 Total</b>	<b>17.51%</b>	<b>17.42</b>	<b>23.56%</b>	<b>18.94</b>	<b>25.22</b>	<b>25.37</b>
<b>Grade 8</b>						
Art	21.75%	20.17	23.91%	16.66	26.94	26.22
CTS (Any course)	19.61%	18.00	18.78%	17.60	22.91	22.61
Drama	16.74%	19.26	15.21%	14.67	25.24	25.36
English Language Arts	17.11%	11.83	20.48%	20.40	27.82	27.72
French as a Second Language	5.38%	15.38	20.37%	12.72	24.06	29.31
French Language Arts	14.55%	4.93	5.58%	9.81	26.65	23.50
Health and Life Skills	23.79%	13.32	13.95%	9.93	25.19	27.22
Humanities	19.70%	17.04	17.58%	15.70	25.97	26.36
Japanese	4.76%	-	23.81%	-	21.00	-
K&E	27.68%	51.85	16.07%	26.67	11.00	13.00
Math	15.91%	17.67	16.77%	16.33	26.21	26.28
Music	14.27%	19.55	13.64%	7.61	27.53	24.00
Physical Education	16.67%	17.52	17.40%	16.84	30.38	30.48

Course	Average % of	Average % of	Average % of	Average % of	Average Number	Average Number
	Students with IPPs	Students with IPPs	Students who are	Students who are	of Students Per	of Students Per
	2016	2015	ELL 2016	ELL 2015	Adult 2016	Adult 2015
Science	15.59%	15.87	16.84%	16.34	26.99	27.01
Social Studies	16.38%	12.41	13.25%	14.88	28.05	26.36
Spanish	9.70%	11.66	5.53%	8.86	26.50	26.00
Ukrainian Language Arts	28.57%	7.03	42.86%	14.07	21.00	21.50
Other Locally Developed Course	25.52%	25.82	14.25%	18.75	22.57	20.93
Other Course	13.26%	18.71	12.18%	16.78	23.67	21.69
Grade 8 Crosscurricular	45.72%	-	59.15%	-	22.52	-
<b>Grade 8 Total</b>	<b>17.41%</b>	<b>16.99</b>	<b>17.27%</b>	<b>16.19</b>	<b>26.26</b>	<b>26.24</b>
<b>Grade 9</b>						
Art	21.76%	20.29	9.06%	16.56	25.09	25.00
Chinese	0.00%	0.00	64.00%	13.64	25.00	22.00
CTS (Any course)	18.00%	17.70	14.82%	16.79	23.38	23.58
Drama	24.77%	23.19	13.29%	5.24	23.78	25.53
English Language Arts	13.42%	13.06	17.83%	16.18	27.20	26.71
French as a Second Language	10.15%	17.49	13.58%	9.37	21.92	26.23
French Language Arts	7.75%	7.45	2.10%	13.99	26.89	28.17
Health and Life Skills	9.90%	18.42	18.25%	10.28	29.63	29.33
Humanities	21.65%	18.91	13.18%	11.66	26.55	27.52
K&E	57.43%	45.32	28.33%	7.41	12.83	14.83
Math	19.32%	17.34	13.43%	13.72	26.74	25.70
Music	15.60%	12.69	19.54%	12.26	23.50	27.27
Physical Education	22.12%	14.57	11.65%	11.43	30.39	29.35
Science	18.45%	16.37	14.20%	12.84	27.80	27.47
Social Studies	16.59%	15.05	14.14%	17.22	27.86	26.81
Spanish	12.02%	11.72	8.28%	6.03	25.00	27.20
Other Locally Developed Course	18.79%	15.21	18.80%	18.72	22.31	23.08
Other Course	22.61%	20.19	7.38%	14.48	22.51	24.41
Grade 9 Crosscurricular	55.36%	-	3.57%	-	14.50	-
<b>Grade 9 Total</b>	<b>18.80%</b>	<b>16.84</b>	<b>13.75%</b>	<b>13.73</b>	<b>26.56</b>	<b>26.45</b>
<b>Grade 10</b>						
Art 10	21.13%	17.62	23.16%	19.08	33.13	32.63
Canadian Studies ESL	0.00%	0.00	100.00%	100.00	15.00	24.00
Chinese 10	12.90%	100.00	0.00%	100.00	31.00	2.00
Choral Music 10	25.40%	17.65	10.43%	11.76	14.00	17.00
CTS (Any course)	22.64%	22.11	12.94%	12.58	22.00	21.99
Drama 10	48.09%	23.38	16.82%	4.41	25.33	24.50
English Language Arts 10 -2	32.97%	33.13	36.37%	21.74	22.91	24.18
English Language Arts 10-1	16.79%	13.31	14.81%	11.42	32.10	33.64
English Language Arts 10-4	68.59%	55.16	0.00%	2.94	17.50	13.88
French as a Second Language 10	10.11%	19.14	13.62%	22.35	28.60	18.50
French Language Arts 10-1	6.45%	9.15	3.23%	2.03	31.00	35.67
French Language Arts 10-2	0.00%	-	20.00%	-	15.00	-
General Music 10	26.19%	17.65	9.52%	2.94	21.00	34.00
German 10	22.22%	-	0.00%	-	27.00	-
Instrumental Music 10	15.89%	40.00	1.52%	0.00	23.00	15.00
Japanese 10	16.99%	-	10.53%	-	33.75	-
Latin 10	5.00%	-	30.00%	-	20.00	-
Leadership	29.22%	25.00	9.59%	7.14	22.33	28.00
Math 10-C	13.63%	-	10.41%	-	30.85	-
Math 10 - 1	-	13.23	-	16.90	-	33.33
Math 10 - 2	-	40.10	-	16.64	-	27.20
Math 10-3	46.55%	-	20.06%	-	24.75	-
Math 10-4	76.17%	66.83	0.00%	10.74	17.00	22.17
Physical Education 10	17.16%	18.94	13.27%	9.42	34.90	36.13
Science 10	13.02%	13.93	13.01%	16.65	33.17	34.07
Science 10-4	84.62%	76.59	30.77%	6.55	6.50	19.25
Science 14	47.92%	35.27	24.53%	19.14	15.30	23.92
Social Studies 10-1	12.90%	16.00	9.78%	10.95	32.04	33.23
Social Studies 10-2	32.12%	30.24	25.16%	25.37	25.96	26.38

Course	Average % of	Average % of	Average % of	Average % of	Average Number	Average Number
	Students with IPPs	Students with IPPs	Students who are	Students who are	of Students Per	of Students Per
	2016	2015	ELL 2016	ELL 2015	Adult 2016	Adult 2015
Spanish 10	20.07%	20.66	4.72%	8.99	20.33	30.00
Other K&E Course	60.00%	60.56	0.00%	0.00	15.00	18.67
Other Locally Developed Course	23.71%	20.31	24.06%	19.25	20.31	25.29
Other Course	38.00%	19.04	58.50%	26.21	14.48	23.13
Grade 10 Crosscurricular	36.55%	-	15.43%	-	19.17	-
<b>Grade 10 Total</b>	<b>23.00%</b>	<b>21.62</b>	<b>18.65%</b>	<b>15.49</b>	<b>26.19</b>	<b>27.96</b>
<b>Grade 11</b>						
Art 20	25.10%	21.72	20.88%	7.98	32.00	28.09
Art 21	15.63%	-	6.25%	-	32.00	-
Biology 20	17.86%	11.77	7.30%	9.42	34.00	34.03
CALM 20	32.38%	18.54	2.24%	19.00	25.86	24.86
Canadian Studies ESL	0.00%	5.00	100.00%	100.00	17.00	20.00
Career and Life Management	36.60%	18.23	14.12%	8.33	17.40	31.25
Chemistry 20	12.02%	10.41	11.53%	16.92	36.67	33.31
Chinese 20	11.76%	11.76	0.00%	5.88	17.00	17.00
Choral Music 20	8.70%	9.68	6.52%	17.74	14.50	62.00
CTS (Any course)	30.70%	25.29	8.55%	9.86	14.80	17.74
Drama 20	17.39%	23.60	17.39%	5.51	23.00	22.67
English Language Arts 20 -2	37.08%	31.96	15.48%	19.55	29.81	28.19
English Language Arts 20-1	11.04%	10.37	14.48%	16.25	34.27	36.16
English Language Arts 20-4	74.81%	60.00	10.37%	0.00	16.67	20.00
French as a Second Language 20	10.69%	14.88	15.33%	11.14	22.41	24.67
French Language Arts 20-1	6.12%	-	6.67%	-	31.33	-
German 20	11.11%	16.21	0.00%	9.09	27.00	31.50
Japanese 20	13.30%	-	28.74%	-	31.40	-
Leadership	31.51%	27.59	0.00%	0.00	15.75	29.00
Math 20-1	10.48%	11.52	13.40%	16.56	32.39	33.16
Math 20-2	29.94%	21.57	7.26%	6.95	27.54	30.08
Math 20-3	41.74%	-	14.13%	-	21.57	-
Math 20-4	50.96%	49.37	13.32%	7.07	20.50	24.33
Physical Education 20	25.38%	18.84	16.45%	6.56	27.80	32.14
Physics 20	14.64%	8.34	27.87%	21.37	28.22	28.21
Science 20	16.70%	22.06	11.12%	9.01	23.25	31.33
Science 20-4	34.95%	66.10	0.00%	10.20	17.00	23.75
Science 24	45.35%	44.01	12.13%	12.19	20.67	25.11
Social Studies 20-1	11.36%	14.93	15.57%	6.24	33.00	34.38
Social Studies 20-2	34.35%	34.24	22.72%	25.63	26.43	30.36
Social Studies 20-4	85.00%	95.83	0.00%	0.00	20.00	10.33
Spanish 20	20.00%	18.54	3.33%	4.00	24.00	26.71
Other Locally Developed Course	17.54%	32.97	17.56%	8.17	22.33	22.77
Other Course	34.24%	27.12	14.02%	21.73	17.14	22.19
Grade 11 Crosscurricular	41.20%	-	35.90%	-	11.17	-
<b>Grade 11 Total</b>	<b>21.95%</b>	<b>21.16</b>	<b>13.85%</b>	<b>13.62</b>	<b>26.77</b>	<b>28.66</b>
<b>Grade 12</b>						
Art 30	9.62%	11.19	16.67%	6.29	16.00	25.00
Biology 30	16.39%	11.92	8.47%	7.89	32.36	31.64
Canadian Studies ESL	3.57%	9.67	100.00%	46.25	13.50	21.50
Chemistry 30	12.49%	8.75	14.36%	17.31	29.97	31.18
Choral Music 30	11.94%	-	22.39%	-	67.00	-
CTS (Any course)	35.63%	19.38	7.50%	5.20	14.74	15.88
English Language Arts 30 -1	16.71%	8.99	12.07%	13.99	32.07	31.94
English Language Arts 30 -2	39.18%	27.60	19.07%	24.45	29.32	30.07
English Language Arts 30-4	92.50%	87.67	19.17%	1.56	9.50	8.75
French as a Second Language 30	13.80%	7.70	6.85%	9.66	34.57	26.14
French Language Arts 30-1	13.01%	15.31	7.58%	8.92	31.00	33.89
French Language Arts 30-2	7.69%	29.73	30.77%	22.91	13.00	30.50
Instrumental Music 30	19.57%	22.47	3.33%	0.95	31.00	26.17
Math 30-1	9.29%	13.98	11.42%	14.54	32.42	33.23
Math 30-2	16.62%	16.53	6.94%	7.94	33.06	31.88

Course	Average % of	Average % of	Average % of	Average % of	Average Number	Average Number
	Students with IPPs	Students with IPPs	Students who are	Students who are	of Students Per	of Students Per
	2016	2015	ELL 2016	ELL 2015	Adult 2016	Adult 2015
Math 30-3	36.86%	-	9.60%	-	24.08	-
Math 31	6.17%	20.30	28.17%	18.01	24.50	33.50
Physical Education 30	17.80%	18.67	15.15%	8.39	24.20	29.67
Physics 30	7.20%	13.41	14.91%	22.82	25.67	29.10
Science 30	23.10%	22.49	7.73%	24.29	29.00	28.00
Social Studies 30-1	14.67%	11.60	8.12%	6.34	31.39	31.36
Social Studies 30-2	24.93%	24.11	16.02%	16.85	29.53	29.86
Other K&E Course	73.33%	90.77	0.00%	0.00	15.00	10.50
Other Locally Developed Course	29.72%	19.83	11.71%	14.34	21.72	25.11
Other Course	28.41%	21.94	14.93%	12.65	20.36	25.58
Grade 12 Crosscurricular	60.50%	-	12.17%	-	14.33	-
<b>Grade 12 Total</b>	<b>21.56%</b>	<b>17.81</b>	<b>12.23%</b>	<b>12.54</b>	<b>27.31</b>	<b>28.30</b>
<b>System</b>	<b>16.04%</b>	<b>14.17</b>	<b>27.23%</b>	<b>26.10</b>	<b>22.57</b>	<b>22.32</b>

### Average Class Sizes by Subject

Course	Average # of Students 2016	Average # of Students 2015	Max # Students 2016	Max # Students 2015	Min # Students 2016	Min # Students 2015	Total Classes Reporting 2016	Total Classes Reporting 2015
<b>Kindergarten</b>								
Art	24.3	22.5	27	60	19	12	3	63
Blackfoot Language and Culture	-	23.0	-	23	-	23	-	1
Cree Language and Culture	-	19.0	-	22	-	17	-	3
Drama	-	20.0	-	23	-	16	-	9
English Language Arts	22.8	20.9	42	42	16	7	24	243
French as a Second Language	19.5	18.8	22	29	17	15	2	12
French Language Arts	20.0	20.2	20	40	20	16	1	26
German Language Arts	21.0	6.0	21	6	21	6	1	1
Health and Life Skills	20.4	22.6	22	40	20	13	5	38
Math	20.3	20.4	26	42	16	4	14	122
Music	21.9	20.8	59	45	14	13	30	45
Physical Education	26.7	25.6	60	61	15	3	28	104
Science	29.8	21.2	97	42	16	13	9	50
Social Studies	24.0	20.8	29	42	16	12	5	52
Spanish Language Arts	16.0	21.4	16	23	16	20	1	7
Ukrainian Language Arts	23.0	19.8	23	21	23	16	1	4
Other Locally Developed Course	17.0	14.4	17	20	17	9	2	5
Other Course	23.6	19.5	57	42	5	6	12	108
Kindergarten Crosscurricular	19.4	-	51	-	2	-	270	-
<b>Grade 1</b>								
Art	22.1	21.9	33	45	17	14	32	94
Blackfoot Language and Culture	-	21.8	-	24	-	21	-	6
Cree Language and Culture	-	22.0	-	23	-	21	-	2
Drama	21.0	21.5	21	26	21	19	1	4
English Language Arts	21.2	21.8	48	50	3	7	129	508
French as a Second Language	23.4	22.5	24	31	23	6	5	26
French Language Arts	18.0	21.3	23	32	9	18	10	43
German Language Arts	26.7	24.6	28	28	26	22	3	5
Health and Life Skills	20.8	21.9	32	46	8	4	23	80
Math	21.5	21.4	27	45	14	4	74	302
Music	22.9	23.2	62	87	16	14	56	70
Physical Education	31.0	27.8	72	71	16	13	72	208
Science	20.5	22.1	26	50	7	5	45	205
Social Studies	21.7	22.0	32	71	14	9	48	190
Spanish Language Arts	19.8	21.7	21	22	17	21	4	6
Ukrainian Language Arts	26.0	-	26	-	26	-	1	-
Other Locally Developed Course	18.0	-	20	-	16	-	2	-
Other Course	18.6	19.3	27	26	4	1	16	47
Grade 1 Crosscurricular	19.8	-	58	-	4	-	279	-
<b>Grade 2</b>								
Art	22.6	21.7	26	29	19	16	14	62
Cree Language and Culture	-	17.0	-	17	-	17	-	1
Drama	22.0	22.0	22	22	22	22	1	2
English Language Arts	20.5	22.1	51	41	3	2	67	390
French as a Second Language	24.0	22.6	24	26	24	20	2	17
French Language Arts	23.0	18.8	25	23	20	17	3	35
German Language Arts	-	24.0	-	27	-	21	-	2
Health and Life Skills	23.9	20.9	49	25	14	15	10	57
Math	21.7	21.8	51	92	10	5	50	261
Music	24.0	26.2	50	99	17	16	42	65
Physical Education	32.1	30.2	82	140	6	14	57	144
Science	22.3	22.1	26	41	14	15	24	173
Social Studies	22.0	22.2	26	44	17	16	25	163
Spanish Language Arts	25.3	19.9	26	21	25	19	4	8
Ukrainian Language Arts	26.0	21.0	26	23	26	19	1	3
Other Locally Developed Course	19.5	-	20	-	19	-	2	-
Other Course	21.3	20.0	25	26	19	7	3	30
Grade 2 Crosscurricular	20.0	-	48	-	3	-	287	-
<b>Grade 3</b>								
Art	23.8	24.8	27	48	8	8	29	73
Blackfoot Language and Culture	-	48.0	-	48	-	48	-	1
Cree Language and Culture	-	24.0	-	24	-	24	-	1
English Language Arts	23.6	23.0	49	48	10	6	98	346
French as a Second Language	23.5	23.3	27	34	19	14	8	17
French Language Arts	20.9	22.0	24	40	17	11	14	31

Course	Average # of Students 2016	Average # of Students 2015	Max # Students 2016	Max # Students 2015	Min # Students 2016	Min # Students 2015	Total Classes Reporting 2016	Total Classes Reporting 2015
German Language Arts	19.0	-	19	-	19	-	1	-
Health and Life Skills	22.5	25.2	27	44	8	11	25	57
Math	22.8	23.6	45	48	5	11	74	231
Music	26.4	29.6	61	112	8	20	54	44
Physical Education	31.3	28.7	65	66	17	7	80	147
Science	23.2	24.9	33	48	17	11	43	162
Social Studies	24.3	24.8	55	48	17	2	53	155
Spanish Language Arts	21.0	29.7	21	40	21	24	1	3
Other Locally Developed Course	22.3	24.5	30	26	17	23	3	2
Other Course	13.7	23.4	29	40	3	16	11	41
Grade 3 Crosscurricular	20.8	-	47	-	2	-	239	-
<b>Grade 4</b>								
Art	29.3	24.1	65	30	16	6	23	56
Chinese	-	24.5	-	39	-	20	-	6
Cree Language and Culture	-	24.0	-	27	-	21	-	2
Drama	31.0	24.0	31	24	31	24	1	1
English Language Arts	24.8	24.9	65	50	6	4	74	308
French as a Second Language	26.2	29.7	45	75	21	13	18	45
French Language Arts	29.7	25.4	45	30	22	17	9	25
German	12.3	-	19	-	6	-	3	-
Health and Life Skills	25.1	27.5	44	54	16	19	16	36
Math	24.3	24.6	45	50	7	3	62	193
Music	26.6	26.1	51	93	15	17	58	61
Physical Education	33.6	30.9	65	99	16	5	66	132
Science	28.6	25.1	65	54	14	11	39	150
Social Studies	27.5	25.6	65	50	16	16	47	131
Spanish	19.3	23.4	27	26	13	19	4	5
Ukrainian	-	29.0	-	30	-	28	-	2
Other Locally Developed Course	19.3	24.0	20	26	19	22	3	3
Other Course	23.1	25.3	35	33	6	3	16	43
Grade 4 Crosscurricular	21.7	-	65	-	5	-	212	-
<b>Grade 5</b>								
Art	26.1	24.7	32	31	16	13	18	34
Blackfoot Language and Culture	39.0	27.0	39	27	39	27	1	1
Chinese	35.0	55.0	35	55	35	55	1	1
CTS (Any course)	25.1	24.4	30	30	17	15	20	13
Drama	21.9	23.0	27	30	12	12	7	13
English Language Arts	24.8	24.5	62	50	4	3	73	201
French as a Second Language	25.8	26.2	33	51	17	18	37	63
French Language Arts	26.0	23.6	28	30	23	12	6	14
German	24.0	-	29	-	19	-	2	-
Health and Life Skills	24.2	24.7	33	29	8	20	15	33
Humanities	26.9	26.4	57	51	8	19	51	82
Japanese	53.0	-	53	-	53	-	1	-
Math	24.4	25.1	34	51	8	10	84	160
Music	26.8	27.9	57	92	17	12	25	42
Physical Education	31.1	30.3	90	61	6	8	72	124
Punjabi	-	23.0	-	23	-	23	-	1
Science	25.4	25.1	39	51	11	5	73	156
Social Studies	24.8	24.3	57	50	12	6	43	112
Spanish	19.3	26.3	26	38	8	21	6	9
Other Locally Developed Course	24.0	20.8	24	30	24	10	1	4
Other Course	21.4	25.2	28	30	5	2	5	23
Grade 5 Crosscurricular	22.1	-	38	-	2	-	130	-
<b>Grade 6</b>								
Art	25.9	26.6	57	54	11	16	22	33
Blackfoot Language and Culture	8.0	28.0	8	28	8	28	1	1
Chinese	18.0	24.5	21	25	15	24	2	2
CTS (Any course)	25.1	24.0	47	34	4	14	21	36
Drama	25.6	25.8	41	31	13	18	5	9
English Language Arts	26.5	25.4	62	50	12	10	77	165
French as a Second Language	26.8	25.9	47	36	20	15	28	46
French Language Arts	25.4	27.2	32	32	20	22	9	17
German	12.0	-	12	-	12	-	1	-
Health and Life Skills	29.1	26.9	49	54	12	18	14	34
Humanities	29.4	26.8	59	33	17	8	56	92
Japanese	28.0	31.0	28	31	28	31	1	1
Math	25.6	25.9	59	50	8	13	91	194
Music	25.7	27.9	46	76	16	17	39	44
Physical Education	31.6	30.7	79	65	12	18	73	117

Course	Average # of Students 2016	Average # of Students 2015	Max # Students 2016	Max # Students 2015	Min # Students 2016	Min # Students 2015	Total Classes Reporting 2016	Total Classes Reporting 2015
Punjabi	29.0	-	29	-	29	-	1	-
Science	27.7	26.7	59	50	12	11	73	155
Social Studies	25.4	27.1	31	50	11	16	41	112
Spanish	23.6	24.9	27	30	15	19	8	7
Other Locally Developed Course	23.0	27.0	28	32	20	23	5	9
Other Course	19.8	23.9	27	45	4	2	6	36
Grade 6 Crosscurricular	23.0	-	33	-	1	-	121	-
<b>Grade 7</b>								
Art	27.0	27.0	35	34	18	14	16	42
Chinese	-	32.0	-	32	-	32	-	1
CTS (Any course)	24.9	23.2	87	35	5	12	94	92
Drama	22.3	22.9	29	32	11	6	21	18
English Language Arts	27.6	28.3	39	35	16	12	50	57
French as a Second Language	24.8	28.0	36	35	5	15	25	19
French Language Arts	30.7	29.8	39	33	16	26	19	6
Health and Life Skills	29.6	30.1	33	34	21	27	10	15
Humanities	27.6	27.8	33	33	17	2	106	177
Japanese	-	28.0	-	28	-	28	-	1
Math	28.4	28.8	66	40	11	18	144	136
Music	26.0	29.5	42	51	5	15	17	29
Physical Education	32.7	31.7	98	70	20	13	87	101
Punjabi	-	29.0	-	29	-	29	-	1
Science	28.5	29.0	66	40	11	18	125	119
Social Studies	28.6	28.5	39	35	18	17	43	50
Spanish	25.0	22.5	28	28	22	12	2	4
Ukrainian	24.0	-	24	-	24	-	1	-
Other Locally Developed Course	19.8	22.5	36	33	7	10	23	23
Other Course	21.9	28.2	31	68	5	7	19	27
Grade 7 Crosscurricular	26.3	-	32	-	9	-	7	-
<b>Grade 8</b>								
Art	27.8	27.2	35	37	14	16	17	28
Blackfoot Language and Culture	-	34.0	-	34	-	34	-	1
Chinese	-	39.0	-	39	-	39	-	1
CTS (Any course)	24.7	24.5	72	37	4	11	79	77
Drama	25.2	25.4	35	35	13	12	17	25
English Language Arts	28.1	29.0	36	35	9	18	50	47
French as a Second Language	24.1	29.3	36	42	5	16	18	13
French Language Arts	27.4	23.5	32	29	22	18	17	8
Health and Life Skills	25.8	27.2	33	37	10	14	12	18
Humanities	27.9	28.7	35	37	18	11	96	181
Japanese	21.0	-	21	-	21	-	1	-
K&E	18.0	13.0	28	15	8	9	2	3
Math	28.2	28.7	35	36	16	9	128	135
Music	27.5	24.0	36	35	19	15	15	14
Physical Education	34.0	32.1	150	53	20	19	80	92
Punjabi	-	72.0	-	72	-	72	-	1
Science	28.7	28.8	35	35	20	17	139	127
Social Studies	28.1	28.0	35	35	9	8	43	43
Spanish	26.5	27.5	29	33	24	18	2	6
Ukrainian Language Arts	21.0	21.5	21	22	21	21	1	2
Other K&E Course	-	30.0	-	30	-	30	-	1
Other Locally Developed Course	23.8	22.3	40	33	10	8	27	32
Other Course	24.1	28.0	38	71	11	9	32	32
Grade 8 Crosscurricular	24.2	-	34	-	2	-	9	-
<b>Grade 9</b>								
Art	25.6	25.8	35	33	13	10	29	16
Chinese	25.0	22.0	25	22	25	22	1	1
Cree Language and Culture	-	23.0	-	23	-	23	-	1
CTS (Any course)	24.1	24.3	70	35	7	6	89	87
Drama	23.8	28.0	40	40	11	12	18	15
English Language Arts	27.6	28.5	38	37	10	18	57	62
French as a Second Language	21.9	27.3	36	42	5	16	12	11
French Language Arts	26.9	28.2	32	30	19	26	18	6
Health and Life Skills	29.6	29.3	44	36	21	12	19	18
Humanities	28.2	28.8	36	38	14	10	72	130
K&E	16.0	17.7	24	18	5	17	3	3
Math	28.3	28.8	37	39	3	12	126	143
Music	23.5	27.3	40	41	9	18	16	15
Physical Education	32.8	32.3	84	99	3	19	115	90
Science	29.0	29.2	39	38	16	0	117	145



Course	Average # of Students 2016	Average # of Students 2015	Max # Students 2016	Max # Students 2015	Min # Students 2016	Min # Students 2015	Total Classes Reporting 2016	Total Classes Reporting 2015
Social Studies	28.9	28.9	37	37	4	14	59	62
Spanish	25.0	27.2	30	31	22	23	3	5
Other K&E Course	-	9.0	-	9	-	9	-	1
Other Locally Developed Course	23.9	23.1	40	36	9	10	35	37
Other Course	25.0	28.1	41	68	7	12	21	42
Grade 9 Crosscurricular	15.5	-	28	-	3	-	2	-
<b>Grade 10</b>								
Art 10	33.1	32.6	40	73	25	17	8	19
Canadian Studies ESL	21.5	24.0	26	24	17	24	2	1
Chinese 10	31.0	2.0	31	2	31	2	1	1
Choral Music 10	14.0	17.0	17	17	11	17	2	1
CTS (Any course)	23.0	25.2	38	39	2	2	58	120
Drama 10	30.3	27.6	38	31	23	23	3	5
English Language Arts 10 -2	27.5	25.9	38	38	15	8	16	25
English Language Arts 10-1	32.1	33.6	41	41	19	21	21	42
English Language Arts 10-4	22.0	17.0	26	25	18	4	2	4
French as a Second Language 10	28.6	18.5	38	38	20	4	5	6
French Language Arts 10-1	31.0	35.7	31	42	31	27	1	3
French Language Arts 10-2	15.0	-	15	-	15	-	1	-
General Music 10	21.0	34.0	21	34	21	34	2	1
German 10	27.0	-	27	-	27	-	1	-
Instrumental Music 10	23.0	15.0	33	15	16	15	4	1
Japanese 10	33.8	-	35	-	32	-	4	-
Latin 10	20.0	-	20	-	20	-	1	-
Leadership	29.3	28.0	42	28	19	28	3	1
Math 10 - 1	-	33.3	-	42	-	20	-	48
Math 10 -2	-	27.2	-	32	-	25	-	5
Math 10-C	32.2	-	39	-	7	-	43	-
Math 10-3	27.7	-	39	-	9	-	12	-
Math 10-4	20.7	27.3	26	35	14	6	3	6
Physical Education 10	37.7	41.5	70	99	25	21	20	31
Registered Apprenticeship Program	-	1.0	-	1	-	1	-	1
Science 10	33.2	34.8	43	54	16	18	35	61
Science 10-4	13.0	29.0	13	39	13	19	1	2
Science 14	18.4	28.2	27	35	4	22	5	12
Social Studies 10-1	33.3	33.2	41	40	18	11	28	47
Social Studies 10-2	27.9	28.0	40	36	14	11	13	17
Social Studies 10-4	-	21.2	-	40	-	14	-	5
Spanish 10	20.3	30.0	24	34	17	26	3	6
Other K&E Course	15.0	18.7	15	22	15	14	1	3
Other Locally Developed Course	23.1	26.2	41	67	8	10	25	26
Other Course	19.5	25.9	35	56	4	1	24	41
Grade 10 Crosscurricular	44.7	-	57	-	38	-	3	-
<b>Grade 11</b>								
Art 20	32.0	28.1	34	40	30	16	2	11
Art 21	32.0	-	32	-	32	-	1	-
Biology 20	34.8	34.5	43	45	2	19	26	48
CALM 20	25.9	25.4	36	37	14	13	7	14
Canadian Studies ESL	17.0	20.0	19	20	15	20	2	1
Career and Life Management	18.2	31.3	32	38	6	27	5	4
Chemistry 20	36.7	33.3	93	41	18	20	21	39
Chinese 20	17.0	17.0	17	17	17	17	1	1
Choral Music 20	14.5	62.0	23	62	6	62	2	1
CTS (Any course)	18.1	19.9	57	43	5	10	32	45
Drama 20	23.0	22.7	23	26	23	20	1	3
English Language Arts 20 -2	31.1	28.9	38	37	22	7	13	18
English Language Arts 20-1	34.8	36.2	39	49	20	19	31	38
English Language Arts 20-4	19.7	20.0	36	20	5	20	3	1
French as a Second Language 20	26.1	24.7	50	35	10	14	9	6
French Language Arts 20-1	31.3	-	39	-	25	-	3	-
General Music 20	-	25.0	-	25	-	25	-	1
German 20	27.0	31.5	27	33	27	30	1	2
Japanese 20	31.4	-	38	-	25	-	5	-
Leadership	18.3	29.0	20	29	14	29	4	1
Math 20-1	32.4	33.2	40	40	6	24	33	32
Math 20-2	27.5	30.1	37	40	8	16	13	13
Math 20-3	27.1	-	41	-	9	-	7	-
Math 20-4	20.5	26.2	28	34	13	12	2	6
Physical Education 20	31.4	32.1	38	41	21	18	5	14
Physics 20	28.2	28.2	38	38	12	16	18	19

Course	Average # of Students 2016	Average # of Students 2015	Max # Students 2016	Max # Students 2015	Min # Students 2016	Min # Students 2015	Total Classes Reporting 2016	Total Classes Reporting 2015
Registered Apprenticeship Program	-	26.5	-	29	-	24	-	2
Science 20	23.3	31.3	32	37	18	26	8	6
Science 20-4	17.0	23.8	31	39	3	17	2	4
Science 24	24.0	25.1	31	33	11	16	6	9
Social Studies 20-1	33.0	35.1	41	57	11	15	17	33
Social Studies 20-2	26.4	31.1	39	37	18	17	7	25
Social Studies 20-4	20.0	12.0	20	16	20	10	1	3
Spanish 20	24.0	26.7	30	32	18	15	2	7
Other K&E Course	-	13.4	-	21	-	6	-	5
Other Locally Developed Course	23.4	22.8	56	43	4	13	15	13
Other Course	21.3	23.2	36	57	7	0	19	36
Grade 11 Crosscurricular	16.7	-	22	-	13	-	3	-
<b>Grade 12</b>								
Art 30	16.0	25.0	26	33	6	17	2	5
Art 31	-	21.0	-	21	-	21	-	1
Biology 30	35.3	31.6	65	39	9	21	21	28
Canadian Studies ESL	20.0	31.5	26	40	14	23	2	2
Chemistry 30	30.0	31.9	38	41	3	18	29	39
Chinese 30	-	35.0	-	36	-	34	-	2
Choral Music 30	67.0	-	67	-	67	-	1	-
CTS (Any course)	16.6	21.2	35	43	2	10	34	35
Drama 30	-	24.0	-	24	-	24	-	1
English Language Arts 30 -1	32.1	31.9	40	39	17	20	30	31
English Language Arts 30 -2	30.2	30.1	38	38	9	13	17	14
English Language Arts 30-4	14.5	10.8	20	16	9	6	2	4
French as a Second Language 30	34.6	26.1	61	35	23	17	7	7
French Language Arts 30-1	31.0	33.9	36	40	22	28	3	9
French Language Arts 30-2	13.0	30.5	13	35	13	26	1	2
Instrumental Music 30	31.0	32.0	47	35	15	29	2	3
Math 30-1	32.4	33.2	44	40	16	18	43	48
Math 30-2	33.1	31.9	41	41	15	22	16	16
Math 30-3	26.7	-	34	-	20	-	6	-
Math 31	24.5	33.5	25	36	24	31	2	2
Physical Education 30	24.2	29.7	30	42	19	20	5	9
Physics 30	25.7	29.1	35	35	16	23	9	10
Science 24	-	27.7	-	36	-	23	-	3
Science 30	29.0	28.0	32	37	23	14	8	6
Social Studies 30-1	31.4	31.4	46	39	12	20	18	28
Social Studies 30-2	29.5	30.9	38	41	6	6	15	29
Spanish 30	-	20.0	-	38	-	9	-	3
Other K&E Course	15.0	10.5	15	21	15	5	2	6
Other Locally Developed Course	22.9	28.6	47	62	2	10	18	19
Other Course	22.3	26.3	45	62	2	3	22	25
Grade 12 Crosscurricular	14.3	-	25	-	8	-	3	-
<b>System</b>	<b>25.5</b>	<b>25.5</b>	<b>150</b>	<b>140</b>	<b>1</b>	<b>0</b>	<b>7952</b>	<b>12892</b>

# Appendix A

## Summary of Class Size Census

2014 December 2

Summary of Combined Record	Average	Median	ELL	IPP	% of IPP plus ELL Classes exceeding ACOL
<b>K</b>	<b>20.33</b>	<b>20</b>	<b>88%</b>	<b>77%</b>	<b>78%</b>
<b>Grade 1</b>	<b>22.46</b>	<b>22</b>	<b>83%</b>	<b>73%</b>	<b>87%</b>
Grade 1/2 Split	22.50	21	96%	86%	86%
Grade 1/2/3 Split	23.67	27	100%	100%	83%
<b>Grade 2</b>	<b>22.68</b>	<b>21</b>	<b>86%</b>	<b>75%</b>	<b>92%</b>
Grade 2/3 Split	26.16	24	98%	96%	94%
Grade 2/3/4 Split	23.13	29	88%	88%	88%
<b>Grade 3</b>	<b>23.80</b>	<b>22</b>	<b>91%</b>	<b>77%</b>	<b>91%</b>
<b>Average Total Div 1</b>					
	<b>22.43</b>				<b>17</b>
Grade 3/4 Split	25.97	<b>25</b>	94%	85%	88%
Grade 3/4/5	31.80	20	80%	20%	40%
<b>Grade 4</b>	<b>25.16</b>	<b>25</b>	<b>92%</b>	<b>85%</b>	<b>63%</b>
Grade 4/5 Split	26.57	25	94%	95%	70%
<b>Grade 5</b>	<b>25.78</b>	<b>25</b>	<b>86%</b>	<b>84%</b>	<b>78%</b>
Grade 5/6 Split	24.87	24	192	92%	61%
<b>Grade 6</b>	<b>27.11</b>	<b>27</b>	<b>87%</b>	<b>86%</b>	<b>79%</b>
<b>Average Total Div 2</b>					
	<b>26.03</b>				<b>23</b>
Grade 6/7 Split	23.70	24	36%	36%	45%
<b>Grade 7</b>	<b>27.27</b>	<b>28</b>	<b>75%</b>	<b>90%</b>	<b>72%</b>
<b>Grade 8</b>	<b>27.88</b>	<b>29</b>	<b>77%</b>	<b>90%</b>	<b>74%</b>
Grade 8/9	23.06	24	49%	68%	29%
<b>Grade 9</b>	<b>27.29</b>	<b>28</b>	<b>74%</b>	<b>89%</b>	<b>55%</b>
<b>Average Junior High</b>					
	<b>27.02</b>				<b>25</b>
<b>Grade 10</b>	<b>31.20</b>	<b>31</b>	<b>73%</b>	<b>93%</b>	<b>64%</b>
Grade 10/11	24.81	24	51%	93%	31%
Grade 10/11/12	22.75	20	63%	79%	24%
<b>Grade 11</b>	<b>29.80</b>	<b>31</b>	<b>76%</b>	<b>92%</b>	<b>68%</b>
Grade 11/12	24.41	25	62%	92%	45%
<b>Grade 12</b>	<b>29.40</b>	<b>31</b>	<b>81%</b>	<b>90%</b>	<b>68%</b>
<b>Average High School</b>					
	<b>28.16</b>				<b>27</b>

<b>High School Core Class Sizes</b>	<b>Average # of Students</b>
English 10 - 1	32.16
English 10 - 2	26.54
Math 10 -4	27.00
Math 10 C	32.21
Science 10	32.59
Science 14	23.44
Social Studies 10 - 1	32.59
Social Studies 10 - 2	27.25
Biology 20	35.06
Chemistry 20	34.28
English 20 - 1	32.23
English 20 - 2	30.91
Math 20	29.77
Physics 20	29.53
Science 20	26.77
Science 24	26.14
Social Studies 20 - 1	30.43
Social Studies 20 - 2	28.71
Biology 30	30.73
Chemistry 30	29.41
English 30 - 1	31.61
English 30 - 2	31.23
Math 30	31.01
Physics 30	28.94
Science 30 - 1	32.20
Social Studies 30 - 1	29.89
Social Studies 30 - 2	29.50